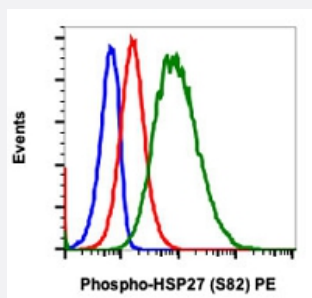


HSPB1 (phospho S82) monoclonal antibody, clone CB2 (PE)

Catalog # MAB21647 Size 100 Reactions

Applications



Flow Cytometry

Flow cytometric analysis of HeLa cells with HSPB1 (phospho S82) monoclonal antibody, clone CB2 (PE) (Cat # MAB21647). Unstained and untreated cells as negative control (blue) or untreated (red) or treated with UV and TPA (green).

Specification

Product Description	Rabbit monoclonal antibody raised against synthetic phosphopeptide of human HSPB1.
Immunogen	A synthetic phosphopeptide corresponding to residues surrounding S82 of human HSPB1.
Host	Rabbit
Reactivity	Human
Form	Liquid
Conjugation	PE
Purification	Protein A/G purification
Isotype	IgG1, kappa
Recommend Usage	Flow Cytometry (5 μ L/ 10^6 cells) The optimal working dilution should be determined by the end user.
Storage Buffer	In PBS, pH 7.4 (0.2% BSA, 0.09% sodium azide).
Storage Instruction	Store at 4°C.

Note

This product contains sodium azide: a POISONOUS AND HAZARDOUS SUBSTANCE which should be handled by trained staff only.

Applications

- Flow Cytometry

Flow cytometric analysis of HeLa cells with HSPB1 (phospho S82) monoclonal antibody, clone CB2 (PE) (Cat # MAB21647).
Unstained and untreated cells as negative control (blue) or untreated (red) or treated with UV and TPA (green).

Gene Info — HSPB1

Entrez GeneID [3315](#)

Protein Accession# [P04792](#)

Gene Name HSPB1

Gene Alias CMT2F, DKFZp586P1322, HMN2B, HS.76067, HSP27, HSP28, Hsp25, SRP27

Gene Description heat shock 27kDa protein 1

Omim ID [602195](#) [606595](#) [608634](#)

Gene Ontology [Hyperlink](#)

Gene Summary The protein encoded by this gene is induced by environmental stress and developmental changes. The encoded protein is involved in stress resistance and actin organization and translocates from the cytoplasm to the nucleus upon stress induction. Defects in this gene are a cause of Charcot-Marie-Tooth disease type 2F (CMT2F) and distal hereditary motor neuropathy (dHMN). [provided by RefSeq]

Other Designations OTTHUMP00000024846|estrogen-regulated 24 kDa protein|heat shock 27kD protein 1|heat shock protein beta-1|stress-responsive protein 27

Pathway

- [MAPK signaling pathway](#)
- [VEGF signaling pathway](#)

Disease

- [Adenocarcinoma](#)
- [Carcinoma](#)
- [Charcot-Marie-Tooth Disease](#)
- [Diabetic Nephropathies](#)
- [Genetic Predisposition to Disease](#)
- [Lung Neoplasms](#)
- [Small Cell Lung Carcinoma](#)