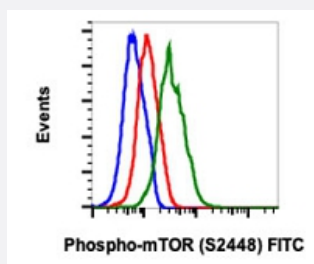


# MTOR (phospho S2448) monoclonal antibody, clone E11 (FITC)

Catalog # MAB21644      Size 100 Reactions

## Applications



### Flow Cytometry

Flow cytometric analysis of A431 cells with MTOR (phospho S2448) monoclonal antibody, clone E11 (FITC) (Cat # MAB21644). Treated with phosphatase and unstained as negative control (blue) or treated with phosphatase (red) or EGF (green).

## Specification

<b>Product Description</b>	Rabbit monoclonal antibody raised against synthetic phosphopeptide of human MTOR.
<b>Immunogen</b>	A synthetic phosphopeptide corresponding to residues surrounding S2448 of human MTOR.
<b>Host</b>	Rabbit
<b>Reactivity</b>	Human
<b>Form</b>	Liquid
<b>Conjugation</b>	FITC
<b>Purification</b>	Protein A/G purification
<b>Isotype</b>	IgG1, kappa
<b>Recommend Usage</b>	Flow Cytometry (5 $\mu$ L/ $10^6$ cells) The optimal working dilution should be determined by the end user.
<b>Storage Buffer</b>	In PBS, pH 7.4 (0.2% BSA, 0.09% sodium azide).
<b>Storage Instruction</b>	Store at 4°C.

## Note

This product contains sodium azide: a POISONOUS AND HAZARDOUS SUBSTANCE which should be handled by trained staff only.

## Applications

- Flow Cytometry

Flow cytometric analysis of A431 cells with MTOR (phospho S2448) monoclonal antibody, clone E11 (FITC) (Cat # MAB21644). Treated with phosphatase and unstained as negative control (blue) or treated with phosphatase (red) or EGF (green).

## Gene Info — MTOR

Entrez GeneID [2475](#)

Protein Accession# [P42345](#)

Gene Name MTOR

Gene Alias FRAP, FRAP1, FRAP2, RAFT1, RAPT1

Gene Description mechanistic target of rapamycin

Omim ID [601231](#)

Gene Ontology [Hyperlink](#)

**Gene Summary** The protein encoded by this gene belongs to a family of phosphatidylinositol kinase-related kinases. These kinases mediate cellular responses to stresses such as DNA damage and nutrient deprivation. This protein acts as the target for the cell-cycle arrest and immunosuppressive effects of the FKBP12-rapamycin complex. The ANGPTL7 gene is located in an intron of this gene. [provided by RefSeq]

**Other Designations** FK506 binding protein 12-rapamycin associated protein 1|FK506 binding protein 12-rapamycin associated protein 2|FK506-binding protein 12-rapamycin complex-associated protein 1|FKBP-rapamycin associated protein|FKBP12-rapamycin complex-associated protein 1

## Pathway

- [Acute myeloid leukemia](#)
- [Adipocytokine signaling pathway](#)
- [ErbB signaling pathway](#)
- [Glioma](#)

- [Insulin signaling pathway](#)
- [mTOR signaling pathway](#)
- [Pathways in cancer](#)
- [Prostate cancer](#)
- [Type II diabetes mellitus](#)

## Disease

- [Adenocarcinoma](#)
- [Alzheimer disease](#)
- [Cardiovascular Diseases](#)
- [Colonic Neoplasms](#)
- [Diabetes Complications](#)
- [Esophageal Neoplasms](#)
- [Kidney Failure](#)
- [Metabolic Syndrome X](#)
- [Neoplasms](#)
- [Osteoporosis](#)
- [Rectal Neoplasms](#)
- [Tobacco Use Disorder](#)