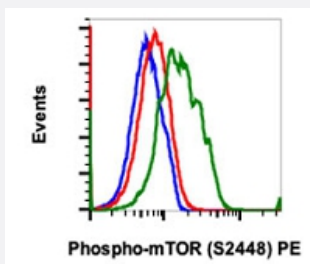


MTOR (phospho S2448) monoclonal antibody, clone E11 (PE)

Catalog # MAB21643 Size 100 Reactions

Applications



Flow Cytometry

Flow cytometric analysis of A431 cells with MTOR (phospho S2448) monoclonal antibody, clone E11 (PE) (Cat # MAB21643). Treated with phosphatase and unstained as negative control (blue) or treated with phosphatase (red) or EGF (green).

Specification

Product Description	Rabbit monoclonal antibody raised against synthetic phosphopeptide of human MTOR.
Immunogen	A synthetic phosphopeptide corresponding to residues surrounding S2448 of human MTOR.
Host	Rabbit
Reactivity	Human
Form	Liquid
Conjugation	PE
Purification	Protein A/G purification
Isotype	IgG1, kappa
Recommend Usage	Flow Cytometry (5 μ L/ 10^6 cells) The optimal working dilution should be determined by the end user.
Storage Buffer	In PBS, pH 7.4 (0.2% BSA, 0.09% sodium azide).
Storage Instruction	Store at 4°C.

Note

This product contains sodium azide: a POISONOUS AND HAZARDOUS SUBSTANCE which should be handled by trained staff only.

Applications

- Flow Cytometry

Flow cytometric analysis of A431 cells with MTOR (phospho S2448) monoclonal antibody, clone E11 (PE) (Cat # MAB21643). Treated with phosphatase and unstained as negative control (blue) or treated with phosphatase (red) or EGF (green).

Gene Info — MTOR

Entrez GeneID [2475](#)

Protein Accession# [P42345](#)

Gene Name MTOR

Gene Alias FRAP, FRAP1, FRAP2, RAFT1, RAPT1

Gene Description mechanistic target of rapamycin

Omim ID [601231](#)

Gene Ontology [Hyperlink](#)

Gene Summary The protein encoded by this gene belongs to a family of phosphatidylinositol kinase-related kinases. These kinases mediate cellular responses to stresses such as DNA damage and nutrient deprivation. This protein acts as the target for the cell-cycle arrest and immunosuppressive effects of the FKBP12-rapamycin complex. The ANGPTL7 gene is located in an intron of this gene. [provided by RefSeq]

Other Designations FK506 binding protein 12-rapamycin associated protein 1|FK506 binding protein 12-rapamycin associated protein 2|FK506-binding protein 12-rapamycin complex-associated protein 1|FKBP-rapamycin associated protein|FKBP12-rapamycin complex-associated protein 1

Pathway

- [Acute myeloid leukemia](#)
- [Adipocytokine signaling pathway](#)
- [ErbB signaling pathway](#)
- [Glioma](#)

- [Insulin signaling pathway](#)
- [mTOR signaling pathway](#)
- [Pathways in cancer](#)
- [Prostate cancer](#)
- [Type II diabetes mellitus](#)

Disease

- [Adenocarcinoma](#)
- [Alzheimer disease](#)
- [Cardiovascular Diseases](#)
- [Colonic Neoplasms](#)
- [Diabetes Complications](#)
- [Esophageal Neoplasms](#)
- [Kidney Failure](#)
- [Metabolic Syndrome X](#)
- [Neoplasms](#)
- [Osteoporosis](#)
- [Rectal Neoplasms](#)
- [Tobacco Use Disorder](#)