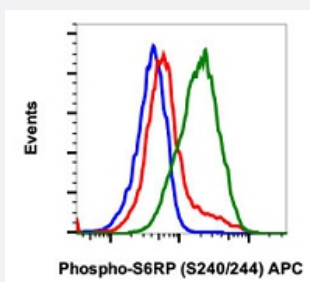


RPS6 (phospho S240/S244) monoclonal antibody, clone CD10 (APC)

Catalog # MAB21642 Size 100 Reactions

Applications



Flow Cytometry

Flow cytometric analysis of K562 cells with RPS6 (phospho S240/S244) monoclonal antibody, clone CD10 (APC) (Cat # MAB21642). Untreated and unstained as negative control (blue) or untreated (red) or treated with EGF (green).

Specification

| | |
|----------------------------|--|
| Product Description | Rabbit monoclonal antibody raised against synthetic phosphopeptide of human RPS6. |
| Immunogen | A synthetic phosphopeptide corresponding to residues surrounding S240/S244 of human RPS6. |
| Host | Rabbit |
| Reactivity | Human |
| Form | Liquid |
| Conjugation | APC |
| Purification | Protein A/G purification |
| Isotype | IgG1, kappa |
| Recommend Usage | Flow Cytometry (5 μ L/ 10^6 cells) The optimal working dilution should be determined by the end user. |
| Storage Buffer | In PBS, pH 7.4 (0.2% BSA, 0.09% sodium azide). |

Storage Instruction

Store at 4°C.

Note

This product contains sodium azide: a POISONOUS AND HAZARDOUS SUBSTANCE which should be handled by trained staff only.

Applications

- Flow Cytometry

Flow cytometric analysis of K562 cells with RPS6 (phospho S240/S244) monoclonal antibody, clone CD10 (APC) (Cat # MAB21642). Untreated and unstained as negative control (blue) or untreated (red) or treated with EGF (green).

Gene Info — RPS6

Entrez GeneID

[6194](#)

Protein Accession#

[P62753](#)

Gene Name

RPS6

Gene Alias

-

Gene Description

ribosomal protein S6

Omim ID

[180460](#)

Gene Ontology

[Hyperlink](#)

Gene Summary

Ribosomes, the organelles that catalyze protein synthesis, consist of a small 40S subunit and a large 60S subunit. Together these subunits are composed of 4 RNA species and approximately 80 structurally distinct proteins. This gene encodes a cytoplasmic ribosomal protein that is a component of the 40S subunit. The protein belongs to the S6E family of ribosomal proteins. It is the major substrate of protein kinases in the ribosome, with subsets of five C-terminal serine residues phosphorylated by different protein kinases. Phosphorylation is induced by a wide range of stimuli, including growth factors, tumor-promoting agents, and mitogens. Dephosphorylation occurs at growth arrest. The protein may contribute to the control of cell growth and proliferation through the selective translation of particular classes of mRNA. As is typical for genes encoding ribosomal proteins, there are multiple processed pseudogenes of this gene dispersed through the genome. [provided by RefSeq]

Other Designations

40S ribosomal protein S6|OTTHUMP00000021120|phosphoprotein NP33

Pathway

- [Insulin signaling pathway](#)

- [mTOR signaling pathway](#)
- [Ribosome](#)