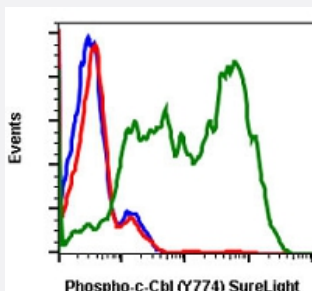


# CBL (phospho Y774) monoclonal antibody, clone R3B8 (SureLight 488)

Catalog # MAB21631      Size 100 Reactions

## Applications



### Flow Cytometry

Flow cytometric analysis of C6 cells with CBL (phospho Y774) monoclonal antibody, clone R3B8 (SureLight 488) (Cat # MAB21631). Untreated and unstained as negative control (blue) or untreated and stained (red) or treated with INF $\alpha$ +IL-4+pervanadate and stained (green).

## Specification

<b>Product Description</b>	Rabbit monoclonal antibody raised against synthetic phosphopeptide of human CBL.
<b>Immunogen</b>	A synthetic phosphopeptide corresponding to residues surrounding Y774 of human CBL.
<b>Host</b>	Rabbit
<b>Reactivity</b>	Human
<b>Form</b>	Liquid
<b>Conjugation</b>	SureLight 488
<b>Purification</b>	Protein A/G purification
<b>Isotype</b>	IgG1, kappa
<b>Recommend Usage</b>	Flow Cytometry (5 $\mu$ L/10 <sup>6</sup> cells) The optimal working dilution should be determined by the end user.
<b>Storage Buffer</b>	In PBS, pH 7.4 (0.2% BSA, 0.09% sodium azide).

## Storage Instruction

Store at 4°C.

## Note

This product contains sodium azide: a POISONOUS AND HAZARDOUS SUBSTANCE which should be handled by trained staff only.

## Applications

- Flow Cytometry

Flow cytometric analysis of C6 cells with CBL (phospho Y774) monoclonal antibody, clone R3B8 (SureLight 488) (Cat # MAB21631). Untreated and unstained as negative control (blue) or untreated and stained (red) or treated with INFα+IL-4+pervanadate and stained (green).

## Gene Info — CBL

## Entrez GeneID

[867](#)

## Protein Accession#

[P22681](#)

## Gene Name

CBL

## Gene Alias

C-CBL, CBL2, RNF55

## Gene Description

Cas-Br-M (murine) ecotropic retroviral transforming sequence

## Omim ID

[165360](#)

## Gene Ontology

[Hyperlink](#)

## Gene Summary

The cbl oncogene was first identified as part of a transforming retrovirus which induces mouse pre-B and pro-B cell lymphomas. As an adaptor protein for receptor protein-tyrosine kinases, it positively regulates receptor protein-tyrosine kinase ubiquitination in a manner dependent upon its variant SH2 and RING finger domains. Ubiquitination of receptor protein-tyrosine kinases terminates signaling by marking active receptors for degradation. [provided by RefSeq]

## Other Designations

oncogene CBL2

## Pathway

- [Chronic myeloid leukemia](#)
- [Endocytosis](#)
- [ErbB signaling pathway](#)

- [Insulin signaling pathway](#)
- [Jak-STAT signaling pathway](#)
- [Pathways in cancer](#)
- [T cell receptor signaling pathway](#)
- [Ubiquitin mediated proteolysis](#)

## Disease

- [Diabetes Mellitus](#)
- [Disease Progression](#)
- [Genetic Predisposition to Disease](#)
- [Leukemia](#)
- [Tobacco Use Disorder](#)