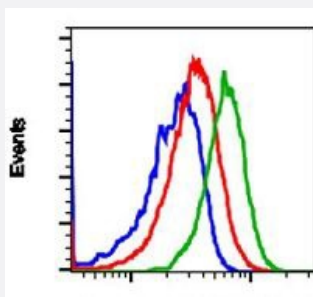


MAP2K1 (phospho S298) monoclonal antibody, clone H8 (PE)

Catalog # MAB21625 Size 100 Reactions

Applications



Flow Cytometry

Flow cytometric analysis of HeLa cells with MAP2K1 (phospho S298) monoclonal antibody, clone H8 (PE) (Cat # MAB21625). Treated with imatinib and unstained as negative control (blue) or treated with imatinib and stained (red) or treated with pervanadate and stained (green).

Specification

Product Description	Rabbit monoclonal antibody raised against synthetic phosphopeptide of human MAP2K1.
Immunogen	A synthetic phosphopeptide corresponding to residues surrounding S298 of human MAP2K1.
Host	Rabbit
Reactivity	Human
Form	Liquid
Conjugation	PE
Purification	Protein A/G purification
Isotype	IgG1, kappa
Recommend Usage	Flow Cytometry (5 μ L/ 10^6 cells) The optimal working dilution should be determined by the end user.
Storage Buffer	In PBS, pH 7.4 (0.2% BSA, 0.09% sodium azide).
Storage Instruction	Store at 4°C.

Note

This product contains sodium azide: a POISONOUS AND HAZARDOUS SUBSTANCE which should be handled by trained staff only.

Applications

- Flow Cytometry

Flow cytometric analysis of HeLa cells with MAP2K1 (phospho S298) monoclonal antibody, clone H8 (PE) (Cat # MAB21625). Treated with imatinib and unstained as negative control (blue) or treated with imatinib and stained (red) or treated with pervanadate and stained (green).

Gene Info — MAP2K1

Entrez GeneID [5604](#)

Protein Accession# [Q02750](#)

Gene Name MAP2K1

Gene Alias MAPKK1, MEK1, MKK1, PRKMK1

Gene Description mitogen-activated protein kinase kinase 1

Omim ID [176872](#)

Gene Ontology [Hyperlink](#)

Gene Summary The protein encoded by this gene is a member of the dual specificity protein kinase family, which acts as a mitogen-activated protein (MAP) kinase kinase. MAP kinases, also known as extracellular signal-regulated kinases (ERKs), act as an integration point for multiple biochemical signals. This protein kinase lies upstream of MAP kinases and stimulates the enzymatic activity of MAP kinases upon wide variety of extra- and intracellular signals. As an essential component of MAP kinase signal transduction pathway, this kinase is involved in many cellular processes such as proliferation, differentiation, transcription regulation and development. [provided by RefSeq]

Other Designations protein kinase, mitogen-activated, kinase 1 (MAP kinase kinase 1)

Pathway

- [Acute myeloid leukemia](#)
- [B cell receptor signaling pathway](#)
- [Bladder cancer](#)

- [Chemokine signaling pathway](#)
- [Chronic myeloid leukemia](#)
- [Colorectal cancer](#)
- [Dorso-ventral axis formation](#)
- [Endometrial cancer](#)
- [ErbB signaling pathway](#)
- [Fc epsilon RI signaling pathway](#)
- [Fc gamma R-mediated phagocytosis](#)
- [Focal adhesion](#)
- [Gap junction](#)
- [Glioma](#)
- [GnRH signaling pathway](#)
- [Insulin signaling pathway](#)
- [Long-term depression](#)
- [Long-term potentiation](#)
- [MAPK signaling pathway](#)
- [Melanogenesis](#)
- [Melanoma](#)
- [Natural killer cell mediated cytotoxicity](#)
- [Neurotrophin signaling pathway](#)
- [Non-small cell lung cancer](#)
- [Pancreatic cancer](#)
- [Pathways in cancer](#)
- [Prion diseases](#)
- [Prostate cancer](#)
- [Regulation of actin cytoskeleton](#)

- [Renal cell carcinoma](#)
- [T cell receptor signaling pathway](#)
- [Thyroid cancer](#)
- [Toll-like receptor signaling pathway](#)
- [Vascular smooth muscle contraction](#)
- [VEGF signaling pathway](#)

Disease

- [Abnormalities](#)
- [Adenocarcinoma](#)
- [Carcinoma](#)
- [Cognition Disorders](#)
- [Developmental Disabilities](#)
- [Ectodermal Dysplasia](#)
- [Genetic Predisposition to Disease](#)
- [Glioma](#)
- [Heart Defects](#)
- [LEOPARD Syndrome](#)
- [Lung Neoplasms](#)
- [Mental Retardation](#)
- [Noonan Syndrome](#)
- [Pancreatic Neoplasms](#)
- [Skin Abnormalities](#)
- [Syndrome](#)