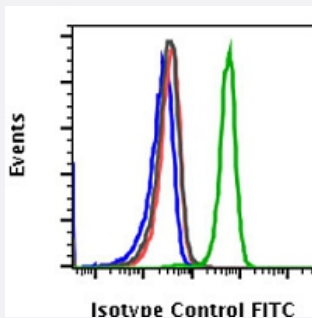


Isotype Control monoclonal antibody, clone G9 (FITC)

Catalog # MAB21605 Size 100 Reactions

Applications



Flow Cytometry

Flow cytometric analysis of U937 cells with Isotype Control monoclonal antibody, clone G9 (FITC) (Cat # MAB21605). Untreated (blue) or treated with IFNa (Red) compared to Phospho-Src (Tyr416) (C4) rabbit mAb (FITC conjugate) untreated (black) or IFNa treated (green).

Specification

Product Description	Rabbit monoclonal antibody raised against isotype control.
Immunogen	KLH carrier protein.
Host	Rabbit
Form	Liquid
Conjugation	FITC
Purification	Protein A/G purification
Isotype	IgG1, kappa
Recommend Usage	Flow Cytometry The optimal working dilution should be determined by the end user.
Storage Buffer	In PBS, pH 7.4 (0.2% BSA, 0.09% sodium azide).
Storage Instruction	Store at 4°C.
Note	This product contains sodium azide: a POISONOUS AND HAZARDOUS SUBSTANCE which should be handled by trained staff only.

Applications

- Flow Cytometry

Flow cytometric analysis of U937 cells with Isotype Control monoclonal antibody, clone G9 (FITC) (Cat # MAB21605). Untreated (blue) or treated with IFNa (Red) compared to Phospho-Src (Tyr416) (C4) rabbit mAb (FITC conjugate) untreated (black) or IFNa treated (green).