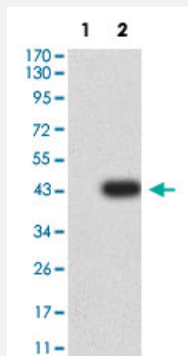


ACSS1 monoclonal antibody, clone 3A7C1

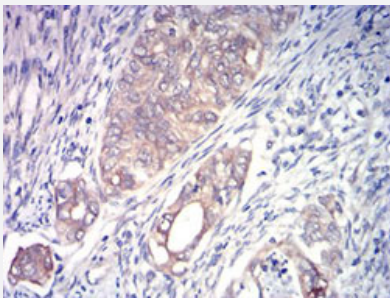
Catalog # MAB21505 Size 100 ug

Applications



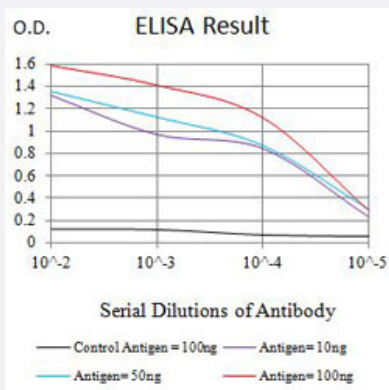
Western Blot (Transfected lysate)

Western Blot analysis of Lane 1: HEK293 and Lane 2: ACSS1-hlgGfC transfected HEK293 cell lysates with ACSS1 monoclonal antibody, clone 3A7C1 (Cat # MAB21505).



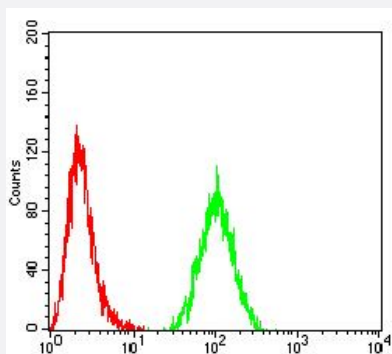
Immunohistochemistry (Formalin/PFA-fixed paraffin-embedded sections)

Immunohistochemical staining (Formalin-fixed paraffin-embedded sections) of human cervix cancer with ACSS1 monoclonal antibody, clone 3A7C1 (Cat # MAB21505).



Enzyme-linked Immunoabsorbent Assay

ELISA analysis with ACSS1 monoclonal antibody, clone 3A7C1 (Cat # MAB21505).



Flow Cytometry

Flow cytometric analysis of HeLa cells with ACSS1 monoclonal antibody, clone 3A7C1 (Cat # MAB21505) (Green). Red: Negative Control.

Specification

Product Description	Mouse monoclonal antibody raised against partial recombinant human ACSS1.
Immunogen	Recombinant protein corresponding to amino acids 548-689 of human ACSS1.
Host	Mouse
Theoretical MW (kDa)	74.8
Reactivity	Human
Form	Liquid
Isotype	IgG1
Recommend Usage	ELISA (1:10000) Flow Cytometry (1:200-1:400) Immunohistochemistry (Formalin/PFA-fixed paraffin-embedded sections) (1:200-1:1000) Western Blot (1:500-1:2000) The optimal working dilution should be determined by the end user.
Storage Buffer	In PBS (0.05% sodium azide).
Storage Instruction	Store at 4°C. For long term storage store at -20°C. Aliquot to avoid repeated freezing and thawing.
Note	This product contains sodium azide: a POISONOUS AND HAZARDOUS SUBSTANCE which should be handled by trained staff only.

Applications

- Western Blot (Transfected lysate)

Western Blot analysis of Lane 1: HEK293 and Lane 2: ACSS1-hlgFc transfected HEK293 cell lysates with ACSS1 monoclonal antibody, clone 3A7C1 (Cat # MAB21505).

- Immunohistochemistry (Formalin/PFA-fixed paraffin-embedded sections)

Immunohistochemical staining (Formalin-fixed paraffin-embedded sections) of human cervix cancer with ACSS1 monoclonal antibody, clone 3A7C1 (Cat # MAB21505).

- Enzyme-linked Immunoabsorbent Assay

ELISA analysis with ACSS1 monoclonal antibody, clone 3A7C1 (Cat # MAB21505).

- Flow Cytometry

Flow cytometric analysis of HeLa cells with ACSS1 monoclonal antibody, clone 3A7C1 (Cat # MAB21505) (Green). Red: Negative Control.

Gene Info — ACSS1

Entrez GeneID [84532](#)

Protein Accession# [Q9NUB1](#)

Gene Name ACSS1

Gene Alias ACAS2L, AceCS2L, FLJ45659, MGC33843

Gene Description acyl-CoA synthetase short-chain family member 1

Gene Ontology [Hyperlink](#)

Gene Summary An acetyl-CoA synthetase found in the mitochondrial matrix has been characterized in both cow and mouse. It is primarily a cardiac enzyme which produces acetyl-CoA mainly for the oxidation of acetate. The protein encoded by this gene is structurally similar to the cow and mouse proteins and therefore may serve a similar function in humans. [provided by RefSeq]

Other Designations OTTHUMP00000030466|OTTHUMP00000030470|OTTHUMP00000030471|OTTHUMP00000030472|acetyl-Coenzyme A synthetase 2 (AMP forming)-like

Pathway

- [Glycolysis / Gluconeogenesis](#)

- [Metabolic pathways](#)

- [Propanoate metabolism](#)

- [Pyruvate metabolism](#)
- [Reductive carboxylate cycle \(CO₂ fixation\)](#)

Disease

- [Cerebral Hemorrhage](#)
- [Chronic Disease](#)
- [Genetic Predisposition to Disease](#)
- [Hypertension](#)
- [Intracranial Hemorrhages](#)
- [Kidney Diseases](#)
- [Stroke](#)
- [Subarachnoid Hemorrhage](#)
- [Tobacco Use Disorder](#)