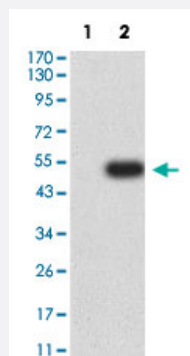


HTRA2 monoclonal antibody, clone 6H7A8

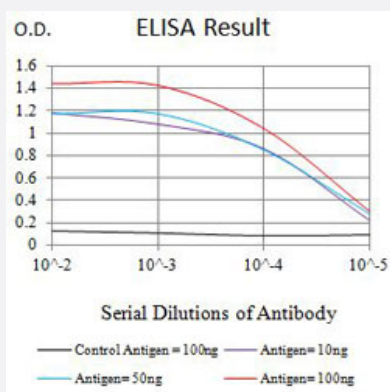
Catalog # MAB21500 Size 100 ug

Applications



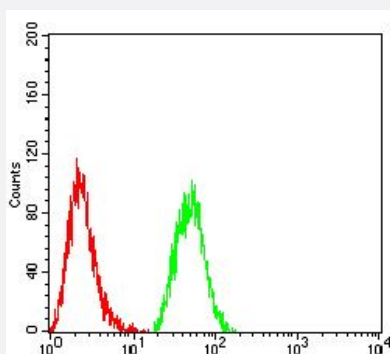
Western Blot (Transfected lysate)

Western Blot analysis of Lane 1: HEK293 and Lane 2: HTRA2-hlgGFc transfected HEK293 cell lysates with HTRA2 monoclonal antibody, clone 6H7A8 (Cat # MAB21500).



Enzyme-linked Immunoabsorbent Assay

ELISA analysis with HTRA2 monoclonal antibody, clone 6H7A8 (Cat # MAB21500).



Flow Cytometry

Flow cytometric analysis of HeLa cells with HTRA2 monoclonal antibody, clone 6H7A8 (Cat # MAB21500) (Green). Red: Negative Control.

Specification

| | |
|----------------------|---|
| Product Description | Mouse monoclonal antibody raised against partial recombinant human HTRA2. |
| Immunogen | Recombinant protein corresponding to amino acids 278-458 of human HTRA2. |
| Host | Mouse |
| Theoretical MW (kDa) | 48.8 |
| Reactivity | Human |
| Form | Liquid |
| Isotype | IgG1 |
| Recommend Usage | ELISA (1:10000) Flow Cytometry (1:200-1:400) Immunohistochemistry (Formalin/PFA-fixed paraffin-embedded sections) (1:200-1:1000) Western Blot (1:500-1:2000) The optimal working dilution should be determined by the end user. |
| Storage Buffer | In PBS (0.05% sodium azide). |
| Storage Instruction | Store at 4°C. For long term storage store at -20°C. Aliquot to avoid repeated freezing and thawing. |
| Note | This product contains sodium azide: a POISONOUS AND HAZARDOUS SUBSTANCE which should be handled by trained staff only. |

Applications

- Western Blot (Transfected lysate)

Western Blot analysis of Lane 1: HEK293 and Lane 2: HTRA2-hlgGfc transfected HEK293 cell lysates with HTRA2 monoclonal antibody, clone 6H7A8 (Cat # MAB21500).

- Immunohistochemistry (Formalin/PFA-fixed paraffin-embedded sections)

- Enzyme-linked Immunoabsorbent Assay

ELISA analysis with HTRA2 monoclonal antibody, clone 6H7A8 (Cat # MAB21500).

- Flow Cytometry

Flow cytometric analysis of HeLa cells with HTRA2 monoclonal antibody, clone 6H7A8 (Cat # MAB21500) (Green). Red: Negative Control.

Gene Info — HTRA2

| | |
|--------------------|--|
| Entrez GeneID | 27429 |
| Protein Accession# | O43464 |
| Gene Name | HTRA2 |
| Gene Alias | OMI, PARK13, PRSS25 |
| Gene Description | HtrA serine peptidase 2 |
| Omim ID | 606441 610297 |
| Gene Ontology | Hyperlink |
| Gene Summary | <p>This gene encodes a serine protease. The protein has been localized in the endoplasmic reticulum and interacts with an alternatively spliced form of mitogen-activated protein kinase 14. The protein has also been localized to the mitochondria with release to the cytosol following apoptotic stimulus. The protein is thought to induce apoptosis by binding the apoptosis inhibitory protein baculoviral IAP repeat-containing 4. Nuclear localization of this protein has also been observed. Alternative splicing of this gene results in two transcript variants encoding different isoforms. Additional transcript variants have been described, but their full-length sequences have not been determined. [provided by RefSeq]</p> |
| Other Designations | HtrA-like serine protease Omi stress-regulated endoprotease high temperature requirement protein A2 protease, serine, 25 |

Disease

- [Genetic Predisposition to Disease](#)
- [Parkinson disease](#)
- [Parkinsonian Disorders](#)