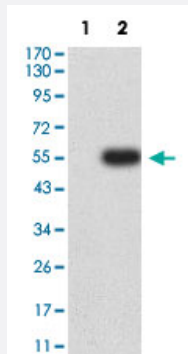


CAPN1 monoclonal antibody, clone 1E6G9

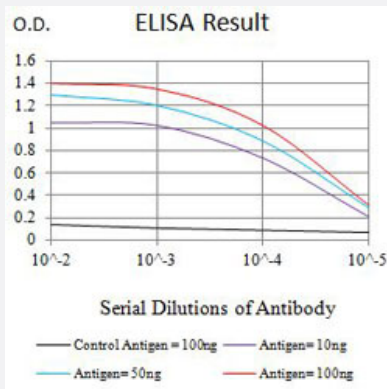
Catalog # MAB21494 Size 100 ug

Applications



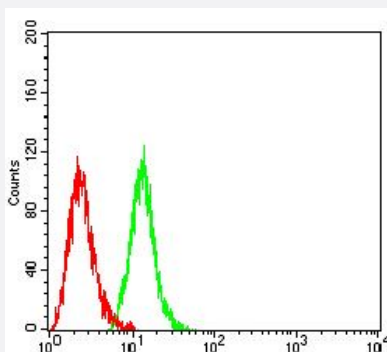
Western Blot (Transfected lysate)

Western Blot analysis of Lane 1: HEK293 and Lane 2: CAPN1-hlgGFc transfected HEK293 cell lysates with CAPN1 monoclonal antibody, clone 1E6G9 (Cat # MAB21494).



Enzyme-linked Immunoabsorbent Assay

ELISA analysis with CAPN1 monoclonal antibody, clone 1E6G9 (Cat # MAB21494).



Flow Cytometry

Flow cytometric analysis of HeLa cells with CAPN1 monoclonal antibody, clone 1E6G9 (Cat # MAB21494) (Green). Red: Negative Control.

Specification

Product Description	Mouse monoclonal antibody raised against partial recombinant human CAPN1.
Immunogen	Recombinant protein corresponding to amino acids 501-714 of human CAPN1.
Host	Mouse
Theoretical MW (kDa)	81.9
Reactivity	Human
Form	Liquid
Isotype	IgG1
Recommend Usage	ELISA (1:10000) Flow Cytometry (1:200-1:400) Western Blot (1:500-1:2000) The optimal working dilution should be determined by the end user.
Storage Buffer	In PBS (0.05% sodium azide).
Storage Instruction	Store at 4°C. For long term storage store at -20°C. Aliquot to avoid repeated freezing and thawing.
Note	This product contains sodium azide: a POISONOUS AND HAZARDOUS SUBSTANCE which should be handled by trained staff only.

Applications

- Western Blot (Transfected lysate)

Western Blot analysis of Lane 1: HEK293 and Lane 2: CAPN1-hlgGfc transfected HEK293 cell lysates with CAPN1 monoclonal antibody, clone 1E6G9 (Cat # MAB21494).

- Enzyme-linked Immunoabsorbent Assay

ELISA analysis with CAPN1 monoclonal antibody, clone 1E6G9 (Cat # MAB21494).

- Flow Cytometry

Flow cytometric analysis of HeLa cells with CAPN1 monoclonal antibody, clone 1E6G9 (Cat # MAB21494) (Green). Red: Negative Control.

Gene Info — CAPN1

Entrez GeneID [823](#)

Protein Accession# [P07384](#)

Gene Name	CAPN1
Gene Alias	CANP, CANP1, CANPL1, muCANP, muCL
Gene Description	calpain 1, (mu/l) large subunit
Omim ID	114220
Gene Ontology	Hyperlink
Gene Summary	<p>The calpains, calcium-activated neutral proteases, are nonlysosomal, intracellular cysteine proteases. The mammalian calpains include ubiquitous, stomach-specific, and muscle-specific proteins. The ubiquitous enzymes consist of heterodimers with distinct large, catalytic subunits associated with a common small, regulatory subunit. This gene encodes the large subunit of the ubiquitous enzyme, calpain 1. [provided by RefSeq]</p>
Other Designations	calcium-activated neutral proteinase calpain 1, large subunit calpain, large polypeptide L1 cell proliferation-inducing protein 30

Pathway

- [Apoptosis](#)