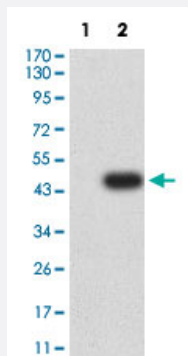


# CLEC10A monoclonal antibody, clone 2C5C6F10

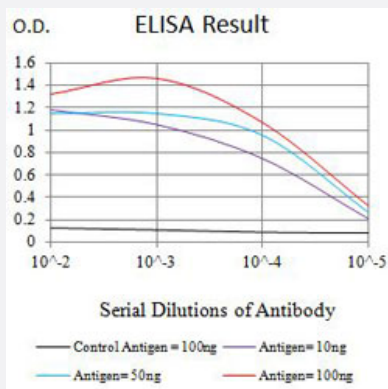
Catalog # MAB21493      Size 100 ug

## Applications



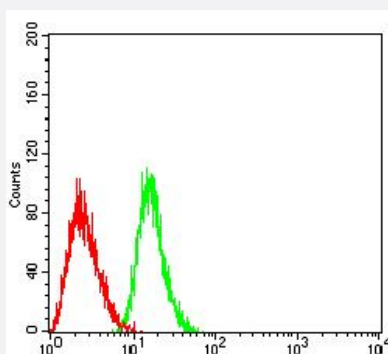
### Western Blot (Transfected lysate)

Western Blot analysis of Lane 1: HEK293 and Lane 2: CLEC10A-hlgGfC transfected HEK293 cell lysates with CLEC10A monoclonal antibody, clone 2C5C6F10 (Cat # MAB21493).



### Enzyme-linked Immunoabsorbent Assay

ELISA analysis with CLEC10A monoclonal antibody, clone 2C5C6F10 (Cat # MAB21493).



### Flow Cytometry

Flow cytometric analysis of HL-60 cells with CLEC10A monoclonal antibody, clone 2C5C6F10 (Cat # MAB21493) (Green). Red: Negative Control.

## Specification

<b>Product Description</b>	Mouse monoclonal antibody raised against partial recombinant human CLEC10A.
<b>Immunogen</b>	Recombinant protein corresponding to amino acids 158-316 of human CLEC10A.
<b>Host</b>	Mouse
<b>Theoretical MW (kDa)</b>	35.4
<b>Reactivity</b>	Human
<b>Form</b>	Liquid
<b>Isotype</b>	IgG1
<b>Recommend Usage</b>	ELISA (1:10000) Flow Cytometry (1:200-1:400) Western Blot (1:500-1:2000) The optimal working dilution should be determined by the end user.
<b>Storage Buffer</b>	In PBS (0.05% sodium azide).
<b>Storage Instruction</b>	Store at 4°C. For long term storage store at -20°C. Aliquot to avoid repeated freezing and thawing.
<b>Note</b>	This product contains sodium azide: a POISONOUS AND HAZARDOUS SUBSTANCE which should be handled by trained staff only.

## Applications

- Western Blot (Transfected lysate)

Western Blot analysis of Lane 1: HEK293 and Lane 2: CLEC10A-hlgGfC transfected HEK293 cell lysates with CLEC10A monoclonal antibody, clone 2C5C6F10 (Cat # MAB21493).

- Enzyme-linked Immunoabsorbent Assay

ELISA analysis with CLEC10A monoclonal antibody, clone 2C5C6F10 (Cat # MAB21493).

- Flow Cytometry

Flow cytometric analysis of HL-60 cells with CLEC10A monoclonal antibody, clone 2C5C6F10 (Cat # MAB21493) (Green).  
Red: Negative Control.

## Gene Info — CLEC10A

**Entrez GeneID** [10462](#)

**Protein Accession#** [Q8IUJ9](#)

Gene Name	CLEC10A
Gene Alias	CD301, CLECSF13, CLECSF14, HML, HML2
Gene Description	C-type lectin domain family 10, member A
Omim ID	<a href="#">605999</a>
Gene Ontology	<a href="#">Hyperlink</a>
Gene Summary	<p>This gene encodes a member of the C-type lectin/C-type lectin-like domain (CTL/CTLD) superfamily. Members of this family share a common protein fold and have diverse functions, such as cell adhesion, cell-cell signalling, glycoprotein turnover, and roles in inflammation and immune response. The encoded type 2 transmembrane protein may function as a cell surface antigen. Two transcript variants encoding distinct isoforms have been identified for this gene. [provided by RefSeq]</p>
Other Designations	C-type (calcium dependent, carbohydrate-recognition domain) lectin, superfamily member 13 (macrophage-derived) C-type (calcium dependent, carbohydrate-recognition domain) lectin, superfamily member 14 (macrophage-derived) C-type lectin, superfamily member

## Disease

- [Polyradiculoneuropathy](#)