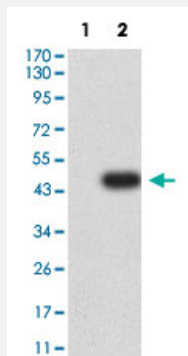


# EZH1 monoclonal antibody, clone 4B11B4

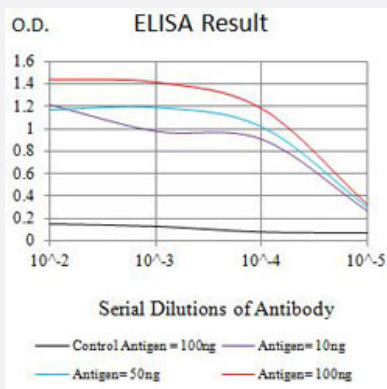
Catalog # MAB21477      Size 100 ug

## Applications



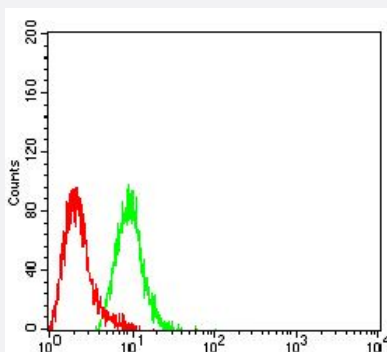
### Western Blot (Transfected lysate)

Western Blot analysis of Lane 1: HEK293 and Lane 2: EZH1-hlgGfc transfected HEK293 cell lysates with EZH1 monoclonal antibody, clone 4B11B4 (Cat # MAB21477).



### Enzyme-linked Immunoabsorbent Assay

ELISA analysis with EZH1 monoclonal antibody, clone 4B11B4 (Cat # MAB21477).



### Flow Cytometry

Flow cytometric analysis of HeLa cells with EZH1 monoclonal antibody, clone 4B11B4 (Cat # MAB21477) (Green). Red: Negative Control.

## Specification

Product Description	Mouse monoclonal antibody raised against partial recombinant human EZH1.
Immunogen	Recombinant protein corresponding to amino acids 135-294 of human EZH1.
Host	Mouse
Theoretical MW (kDa)	85.3
Reactivity	Human
Form	Liquid
Isotype	IgG2a
Recommend Usage	ELISA (1:10000) Flow Cytometry (1:200-1:400) Western Blot (1:500-1:2000) The optimal working dilution should be determined by the end user.
Storage Buffer	In PBS (0.05% sodium azide).
Storage Instruction	Store at 4°C. For long term storage store at -20°C. Aliquot to avoid repeated freezing and thawing.
Note	This product contains sodium azide: a POISONOUS AND HAZARDOUS SUBSTANCE which should be handled by trained staff only.

## Applications

- Western Blot (Transfected lysate)

Western Blot analysis of Lane 1: HEK293 and Lane 2: EZH1-hlgGfc transfected HEK293 cell lysates with EZH1 monoclonal antibody, clone 4B11B4 (Cat # MAB21477).

- Enzyme-linked Immunoabsorbent Assay

ELISA analysis with EZH1 monoclonal antibody, clone 4B11B4 (Cat # MAB21477).

- Flow Cytometry

Flow cytometric analysis of HeLa cells with EZH1 monoclonal antibody, clone 4B11B4 (Cat # MAB21477) (Green). Red: Negative Control.

## Gene Info — EZH1

Entrez GeneID [2145](#)

Protein Accession# [Q92800](#)

Gene Name	EZH1
Gene Alias	KIAA0388
Gene Description	enhancer of zeste homolog 1 (Drosophila)
Omim ID	<a href="#">601674</a>
Gene Ontology	<a href="#">Hyperlink</a>
Gene Summary	EZH1 is a component of a noncanonical Polycomb repressive complex-2 (PRC2) that mediates methylation of histone H3 (see MIM 602812) lys27 (H3K27) and functions in the maintenance of embryonic stem cell pluripotency and plasticity (Shen et al., 2008 [PubMed 19026780]).[supplied by OMIM]
Other Designations	enhancer of zeste homolog 1

## Disease

- [Head and Neck Neoplasms](#)
- [Neoplasm Recurrence](#)
- [Neoplasms](#)