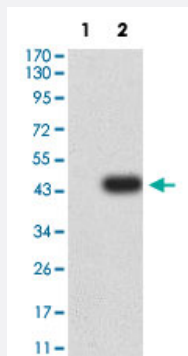


# FCRL5 monoclonal antibody, clone 2A10H7

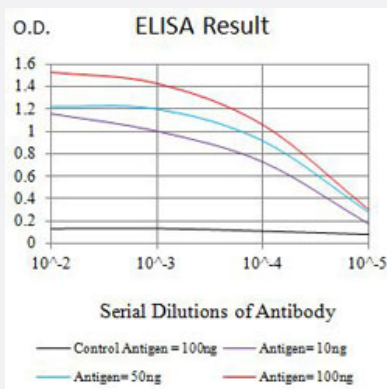
Catalog # MAB21473      Size 100 ug

## Applications



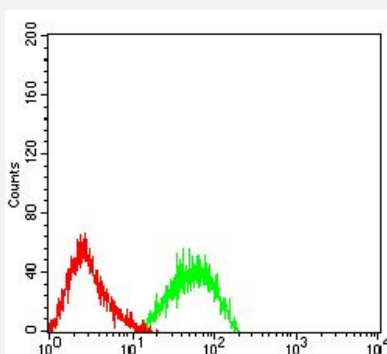
### Western Blot (Transfected lysate)

Western Blot analysis of Lane 1: HEK293 and Lane 2: FCRL5-hlgGfC transfected HEK293 cell lysates with FCRL5 monoclonal antibody, clone 2A10H7 (Cat # MAB21473).



### Enzyme-linked Immunoabsorbent Assay

ELISA analysis with FCRL5 monoclonal antibody, clone 2A10H7 (Cat # MAB21473).



### Flow Cytometry

Flow cytometric analysis of HL-60 cells with FCRL5 monoclonal antibody, clone 2A10H7 (Cat # MAB21473) (Green). Red: Negative Control.

## Specification

<b>Product Description</b>	Mouse monoclonal antibody raised against partial recombinant human FCRL5.
<b>Immunogen</b>	Recombinant protein corresponding to amino acids 16-158 of human FCRL5.
<b>Host</b>	Mouse
<b>Theoretical MW (kDa)</b>	106.4
<b>Reactivity</b>	Human
<b>Form</b>	Liquid
<b>Isotype</b>	IgG1
<b>Recommend Usage</b>	ELISA (1:10000) Flow Cytometry (1:200-1:400) Immunocytochemistry (1:200-1:1000) Western Blot (1:500-1:2000) The optimal working dilution should be determined by the end user.
<b>Storage Buffer</b>	In PBS (0.05% sodium azide).
<b>Storage Instruction</b>	Store at 4°C. For long term storage store at -20°C. Aliquot to avoid repeated freezing and thawing.
<b>Note</b>	This product contains sodium azide: a POISONOUS AND HAZARDOUS SUBSTANCE which should be handled by trained staff only.

## Applications

- Western Blot (Transfected lysate)

Western Blot analysis of Lane 1: HEK293 and Lane 2: FCRL5-hlgGfC transfected HEK293 cell lysates with FCRL5 monoclonal antibody, clone 2A10H7 (Cat # MAB21473).

- Immunocytochemistry

- Enzyme-linked Immunoabsorbent Assay

ELISA analysis with FCRL5 monoclonal antibody, clone 2A10H7 (Cat # MAB21473).

- Flow Cytometry

Flow cytometric analysis of HL-60 cells with FCRL5 monoclonal antibody, clone 2A10H7 (Cat # MAB21473) (Green). Red: Negative Control.

## Gene Info — FCRL5

Entrez GeneID	<a href="#">83416</a>
Protein Accession#	<a href="#">Q96RD9</a>
Gene Name	FCRL5
Gene Alias	BXMAS1, CD307, DKFZp667E2019, DKFZp667F216, FCRH5, FLJ00333, FLJ00397, IRTA2, MGC119590, MGC119592, MGC119593, PRO820
Gene Description	Fc receptor-like 5
Omim ID	<a href="#">605877</a>
Gene Ontology	<a href="#">Hyperlink</a>
Other Designations	OTTHUMP00000018869 immunoglobulin superfamily receptor translocation associated 2 (IRTA2 )

## Disease

- [Kidney Failure](#)
- [Spondylitis](#)