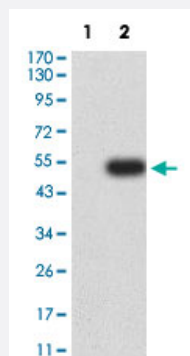


# PLXNC1 monoclonal antibody, clone 3C10B2

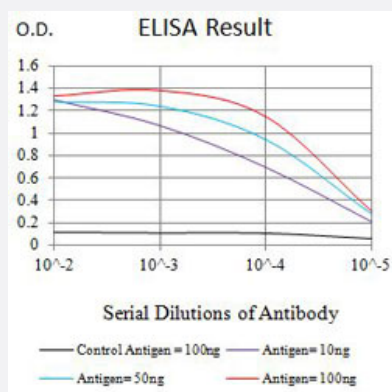
Catalog # MAB21471 Size 100 ug

## Applications



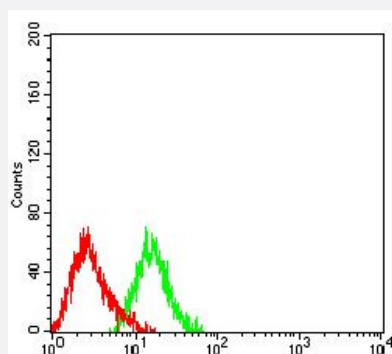
### Western Blot (Transfected lysate)

Western Blot analysis of Lane 1: HEK293 and Lane 2: PLXNC1-hlgGfC transfected HEK293 cell lysates with PLXNC1 monoclonal antibody, clone 3C10B2 (Cat # MAB21471).



### Enzyme-linked Immunoabsorbent Assay

ELISA analysis with PLXNC1 monoclonal antibody, clone 3C10B2 (Cat # MAB21471).



### Flow Cytometry

Flow cytometric analysis of HL-60 cells with PLXNC1 monoclonal antibody, clone 3C10B2 (Cat # MAB21471) (Green). Red: Negative Control.

## Specification

Product Description	Mouse monoclonal antibody raised against partial recombinant human PLXNC1.
Immunogen	Recombinant protein corresponding to amino acids 35-234 of human PLXNC1.
Host	Mouse
Theoretical MW (kDa)	175.7
Reactivity	Human
Form	Liquid
Isotype	IgG1
Recommend Usage	ELISA (1:10000) Flow Cytometry (1:200-1:400) Western Blot (1:500-1:2000) The optimal working dilution should be determined by the end user.
Storage Buffer	In PBS (0.05% sodium azide).
Storage Instruction	Store at 4°C. For long term storage store at -20°C. Aliquot to avoid repeated freezing and thawing.
Note	This product contains sodium azide: a POISONOUS AND HAZARDOUS SUBSTANCE which should be handled by trained staff only.

## Applications

- Western Blot (Transfected lysate)

Western Blot analysis of Lane 1: HEK293 and Lane 2: PLXNC1-hlgGfc transfected HEK293 cell lysates with PLXNC1 monoclonal antibody, clone 3C10B2 (Cat # MAB21471).

- Enzyme-linked Immunoabsorbent Assay

ELISA analysis with PLXNC1 monoclonal antibody, clone 3C10B2 (Cat # MAB21471).

- Flow Cytometry

Flow cytometric analysis of HL-60 cells with PLXNC1 monoclonal antibody, clone 3C10B2 (Cat # MAB21471) (Green). Red: Negative Control.

## Gene Info — PLXNC1

Entrez GeneID [10154](#)

Protein Accession# [O60486](#)

Gene Name	PLXNC1
Gene Alias	CD232, PLXN-C1, VESPR
Gene Description	plexin C1
Omim ID	<a href="#">604259</a>
Gene Ontology	<a href="#">Hyperlink</a>
Other Designations	plexin (semaphorin receptor) receptor for virally-encoded semaphorin

## Pathway

- [Axon guidance](#)

## Disease

- [Genetic Predisposition to Disease](#)
- [Parkinson disease](#)