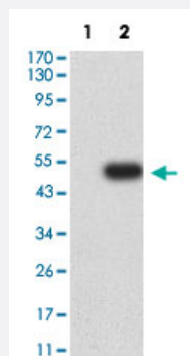


CTNNBL1 monoclonal antibody, clone 3C7F9

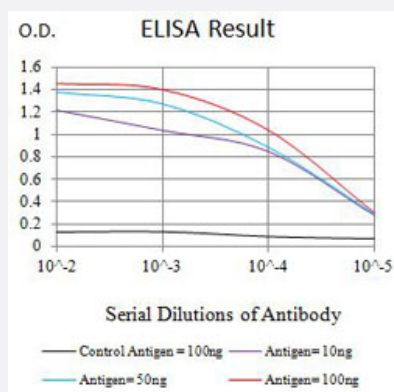
Catalog # MAB21468 Size 100 ug

Applications



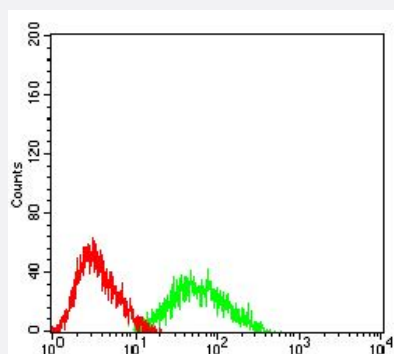
Western Blot (Transfected lysate)

Western Blot analysis of Lane 1: HEK293 and Lane 2: CTNNBL1-hlgGfC transfected HEK293 cell lysates with CTNNBL1 monoclonal antibody, clone 3C7F9 (Cat # MAB21468).



Enzyme-linked Immunoabsorbent Assay

ELISA analysis with CTNNBL1 monoclonal antibody, clone 3C7F9 (Cat # MAB21468).



Flow Cytometry

Flow cytometric analysis of HL-60 cells with CTNNBL1 monoclonal antibody, clone 3C7F9 (Cat # MAB21468) (Green). Red: Negative Control.

Specification

Product Description	Mouse monoclonal antibody raised against partial recombinant human CTNNBL1.
Immunogen	Recombinant protein corresponding to amino acids 390-557 of human CTNNBL1.
Host	Mouse
Theoretical MW (kDa)	65
Reactivity	Human
Form	Liquid
Isotype	IgG2a
Recommend Usage	ELISA (1:10000) Flow Cytometry (1:200-1:400) Immunocytochemistry (1:50-1:200) Immunohistochemistry (Formalin/PFA-fixed paraffin-embedded sections) (1:200-1:1000) Western Blot (1:500-1:2000) The optimal working dilution should be determined by the end user.
Storage Buffer	In PBS (0.05% sodium azide).
Storage Instruction	Store at 4°C. For long term storage store at -20°C. Aliquot to avoid repeated freezing and thawing.
Note	This product contains sodium azide: a POISONOUS AND HAZARDOUS SUBSTANCE which should be handled by trained staff only.

Applications

- Western Blot (Transfected lysate)

Western Blot analysis of Lane 1: HEK293 and Lane 2: CTNNBL1-hlgGfc transfected HEK293 cell lysates with CTNNBL1 monoclonal antibody, clone 3C7F9 (Cat # MAB21468).

- Immunohistochemistry (Formalin/PFA-fixed paraffin-embedded sections)

- Immunocytochemistry

- Enzyme-linked Immunoabsorbent Assay

ELISA analysis with CTNNBL1 monoclonal antibody, clone 3C7F9 (Cat # MAB21468).

- Flow Cytometry

Flow cytometric analysis of HL-60 cells with CTNNBL1 monoclonal antibody, clone 3C7F9 (Cat # MAB21468) (Green). Red: Negative Control.

Gene Info — CTNNBL1

Entrez GeneID [56259](#)

Protein Accession# [Q8WYA6](#)

Gene Name CTNNBL1

Gene Alias C20orf33, FLJ21108, NAP, NYD-SP19, P14L, PP8304, dJ633O20.1

Gene Description catenin, beta like 1

Omim ID [611537](#)

Gene Ontology [Hyperlink](#)

Gene Summary The protein encoded by this gene contains an acidic domain, a putative bipartite nuclear localization signal, a nuclear export signal, a leucine-isoleucine zipper, and phosphorylation motifs. In addition, the encoded protein contains Armadillo/beta-catenin-like repeats, which have been implicated in protein-protein interactions. Although the function of this protein has not been determined, the C-terminal portion of the protein has been shown to possess apoptosis-inducing activity. [provided by RefSeq]

Other Designations beta catenin-like 1|nuclear associated protein

Disease

- [Asthma](#)
- [Birth Weight](#)
- [Cardiovascular Diseases](#)
- [Diabetes Mellitus](#)
- [Genetic Predisposition to Disease](#)
- [Obesity](#)
- [Tobacco Use Disorder](#)