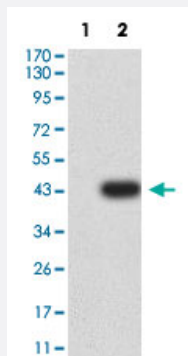


LILRA1 monoclonal antibody, clone 4A1E10A6

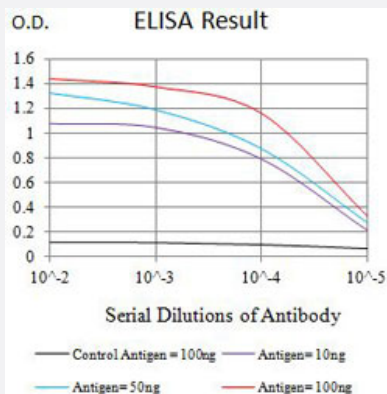
Catalog # MAB21455 Size 100 ug

Applications



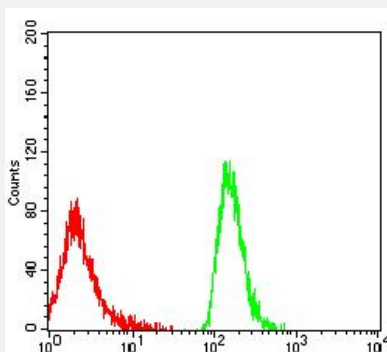
Western Blot (Transfected lysate)

Western Blot analysis of Lane 1: HEK293 and Lane 2: LILRA1-hlgGfC transfected HEK293 cell lysates with LILRA1 monoclonal antibody, clone 4A1E10A6 (Cat # MAB21455).



Enzyme-linked Immunoabsorbent Assay

ELISA analysis with LILRA1 monoclonal antibody, clone 4A1E10A6 (Cat # MAB21455).



Flow Cytometry

Flow cytometric analysis of MOLT4 cells with LILRA1 monoclonal antibody, clone 4A1E10A6 (Cat # MAB21455) (Green). Red: Negative Control.

Specification

Product Description	Mouse monoclonal antibody raised against partial recombinant human LILRA1.
Immunogen	Recombinant protein corresponding to amino acids 322-461 of human LILRA1.
Host	Mouse
Theoretical MW (kDa)	53.3
Reactivity	Human
Form	Liquid
Isotype	IgG2a
Recommend Usage	ELISA (1:10000) Flow Cytometry (1:200-1:400) Western Blot (1:500-1:2000) The optimal working dilution should be determined by the end user.
Storage Buffer	In PBS (0.05% sodium azide).
Storage Instruction	Store at 4°C. For long term storage store at -20°C. Aliquot to avoid repeated freezing and thawing.
Note	This product contains sodium azide: a POISONOUS AND HAZARDOUS SUBSTANCE which should be handled by trained staff only.

Applications

- Western Blot (Transfected lysate)

Western Blot analysis of Lane 1: HEK293 and Lane 2: LILRA1-hlgGfC transfected HEK293 cell lysates with LILRA1 monoclonal antibody, clone 4A1E10A6 (Cat # MAB21455).

- Enzyme-linked Immunoabsorbent Assay

ELISA analysis with LILRA1 monoclonal antibody, clone 4A1E10A6 (Cat # MAB21455).

- Flow Cytometry

Flow cytometric analysis of MOLT4 cells with LILRA1 monoclonal antibody, clone 4A1E10A6 (Cat # MAB21455) (Green). Red: Negative Control.

Gene Info — LILRA1

Entrez GeneID [11024](#)

Protein Accession# [O75019](#)

Gene Name	LILRA1
Gene Alias	CD85I, LIR-6, LIR6, MGC126563
Gene Description	leukocyte immunoglobulin-like receptor, subfamily A (with TM domain), member 1
Omim ID	604810
Gene Ontology	Hyperlink
Gene Summary	subfamily A (with TM domain)
Other Designations	OTTHUMP00000068393 leukocyte immunoglobulin-like receptor 6 leukocyte immunoglobulin-like receptor subfamily A member 1 soluble isoform

Disease

- [Hepatitis C](#)