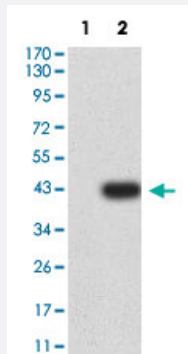


KAT2B monoclonal antibody, clone 7D12C8

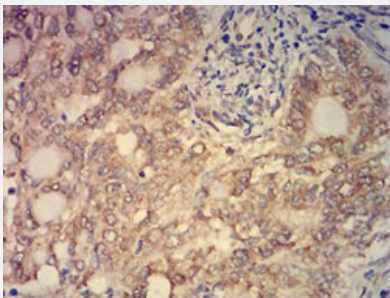
Catalog # MAB21454 Size 100 ug

Applications



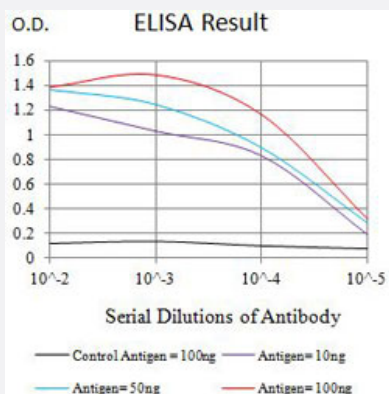
Western Blot (Transfected lysate)

Western Blot analysis of Lane 1: HEK293 and Lane 2: KAT2B-hlgGfC transfected HEK293 cell lysates with KAT2B monoclonal antibody, clone 7D12C8 (Cat # MAB21454).



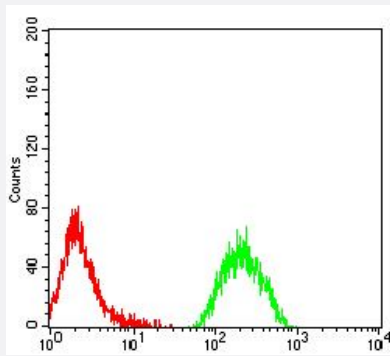
Immunohistochemistry (Formalin/PFA-fixed paraffin-embedded sections)

Immunohistochemical staining (Formalin-fixed paraffin-embedded sections) of human cervix cancer with KAT2B monoclonal antibody, clone 7D12C8 (Cat # MAB21454).



Enzyme-linked Immunoabsorbent Assay

ELISA analysis with KAT2B monoclonal antibody, clone 7D12C8 (Cat # MAB21454).



Flow Cytometry

Flow cytometric analysis of MOLT4 cells with KAT2B monoclonal antibody, clone 7D12C8 (Cat # MAB21454) (Green). Red: Negative Control.

Specification

Product Description	Mouse monoclonal antibody raised against partial recombinant human KAT2B.
Immunogen	Recombinant protein corresponding to amino acids 1-142 of human KAT2B.
Host	Mouse
Theoretical MW (kDa)	93
Reactivity	Human
Form	Liquid
Isotype	IgG1
Recommend Usage	ELISA (1:10000) Flow Cytometry (1:200-1:400) Immunocytochemistry (1:200-1:1000) Immunohistochemistry (Formalin/PFA-fixed paraffin-embedded sections) (1:200-1:1000) Western Blot (1:500-1:2000) The optimal working dilution should be determined by the end user.
Storage Buffer	In PBS (0.05% sodium azide).
Storage Instruction	Store at 4°C. For long term storage store at -20°C. Aliquot to avoid repeated freezing and thawing.
Note	This product contains sodium azide: a POISONOUS AND HAZARDOUS SUBSTANCE which should be handled by trained staff only.

Applications

- Western Blot (Transfected lysate)

Western Blot analysis of Lane 1: HEK293 and Lane 2: KAT2B-hlgGfc transfected HEK293 cell lysates with KAT2B monoclonal antibody, clone 7D12C8 (Cat # MAB21454).

- Immunohistochemistry (Formalin/PFA-fixed paraffin-embedded sections)

Immunohistochemical staining (Formalin-fixed paraffin-embedded sections) of human cervix cancer with KAT2B monoclonal antibody, clone 7D12C8 (Cat # MAB21454).

- Immunocytochemistry

- Enzyme-linked Immunoabsorbent Assay

ELISA analysis with KAT2B monoclonal antibody, clone 7D12C8 (Cat # MAB21454).

- Flow Cytometry

Flow cytometric analysis of MOLT4 cells with KAT2B monoclonal antibody, clone 7D12C8 (Cat # MAB21454) (Green). Red: Negative Control.

Gene Info — KAT2B

Entrez GeneID [8850](#)

Protein Accession# [Q92831](#)

Gene Name KAT2B

Gene Alias CAF, P, P/CAF, PCAF

Gene Description K(lysine) acetyltransferase 2B

Omim ID [602303](#)

Gene Ontology [Hyperlink](#)

Gene Summary CBP and p300 are large nuclear proteins that bind to many sequence-specific factors involved in cell growth and/or differentiation, including c-jun and the adenoviral oncoprotein E1A. The protein encoded by this gene associates with p300/CBP. It has in vitro and in vivo binding activity with C BP and p300, and competes with E1A for binding sites in p300/CBP. It has histone acetyl transferase activity with core histones and nucleosome core particles, indicating that this protein plays a direct role in transcriptional regulation. [provided by RefSeq]

Other Designations CREBBP-associated factor|p300/CBP-associated factor

Pathway

- [Notch signaling pathway](#)

Disease

- [Asthma](#)
- [Breast Neoplasms](#)
- [Genetic Predisposition to Disease](#)
- [Ovarian Neoplasms](#)
- [Tobacco Use Disorder](#)