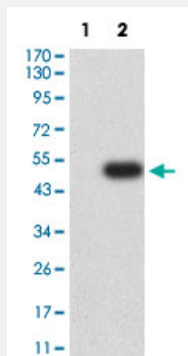


CLEC7A monoclonal antibody, clone 4G2G6

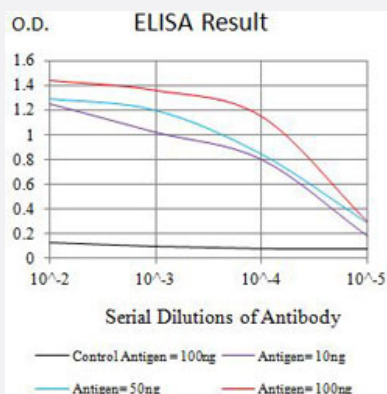
Catalog # MAB21447 Size 100 ug

Applications



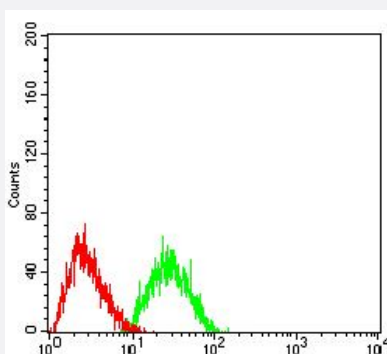
Western Blot (Transfected lysate)

Western Blot analysis of Lane 1: HEK293 and Lane 2: CLEC7A-hlgGfc transfected HEK293 cell lysates with CLEC7A monoclonal antibody, clone 4G2G6 (Cat # MAB21447).



Enzyme-linked Immunoabsorbent Assay

ELISA analysis with CLEC7A monoclonal antibody, clone 4G2G6 (Cat # MAB21447).



Flow Cytometry

Flow cytometric analysis of HL-60 cells with CLEC7A monoclonal antibody, clone 4G2G6 (Cat # MAB21447) (Green). Red: Negative Control.

Specification

Product Description	Mouse monoclonal antibody raised against partial recombinant human CLEC7A.
Immunogen	Recombinant protein corresponding to amino acids 66-247 of human CLEC7A.
Host	Mouse
Theoretical MW (kDa)	27.6
Reactivity	Human
Form	Liquid
Isotype	IgG1
Recommend Usage	ELISA (1:10000) Flow Cytometry (1:200-1:400) Immunocytochemistry (1:200-1:1000) Western Blot (1:500-1:2000) The optimal working dilution should be determined by the end user.
Storage Buffer	In PBS (0.05% sodium azide).
Storage Instruction	Store at 4°C. For long term storage store at -20°C. Aliquot to avoid repeated freezing and thawing.
Note	This product contains sodium azide: a POISONOUS AND HAZARDOUS SUBSTANCE which should be handled by trained staff only.

Applications

- Western Blot (Transfected lysate)

Western Blot analysis of Lane 1: HEK293 and Lane 2: CLEC7A-hlgGfc transfected HEK293 cell lysates with CLEC7A monoclonal antibody, clone 4G2G6 (Cat # MAB21447).

- Immunocytochemistry

- Enzyme-linked Immunoabsorbent Assay

ELISA analysis with CLEC7A monoclonal antibody, clone 4G2G6 (Cat # MAB21447).

- Flow Cytometry

Flow cytometric analysis of HL-60 cells with CLEC7A monoclonal antibody, clone 4G2G6 (Cat # MAB21447) (Green). Red: Negative Control.

Gene Info — CLEC7A

Entrez GeneID	64581
Protein Accession#	Q9BXN2
Gene Name	CLEC7A
Gene Alias	BGR, CLECSF12, DECTIN1
Gene Description	C-type lectin domain family 7, member A
Omim ID	606264
Gene Ontology	Hyperlink
Gene Summary	<p>This gene encodes a member of the C-type lectin/C-type lectin-like domain (CTL/CTLD) superfamily. The encoded glycoprotein is a small type II membrane receptor with an extracellular C-type lectin-like domain fold and a cytoplasmic domain with an immunoreceptor tyrosine-based activation motif. It functions as a pattern-recognition receptor that recognizes a variety of beta-1,3-linked and beta-1,6-linked glucans from fungi and plants, and in this way plays a role in innate immune response. Alternate transcriptional splice variants, encoding different isoforms, have been characterized. This gene is closely linked to other CTL/CTLD superfamily members on chromosome 12p13 in the natural killer gene complex region. [provided by RefSeq]</p>
Other Designations	C-type (calcium dependent, carbohydrate-recognition domain) lectin, superfamily member 12 beta-glucan receptor dectin-1 dendritic cell-associated C-type lectin 1 dendritic cell-associated C-type lectin-1 lectin-like receptor 1

Disease

- [Aspergillosis](#)
- [Candidiasis](#)
- [Disease Susceptibility](#)
- [Genetic Predisposition to Disease](#)
- [Graft vs Host Disease](#)
- [HIV Infections](#)
- [Inflammation](#)
- [Inflammatory Bowel Diseases](#)
- [Opportunistic Infections](#)