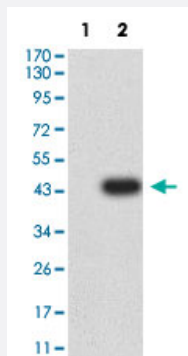


IGSF2 monoclonal antibody, clone 8D4D3

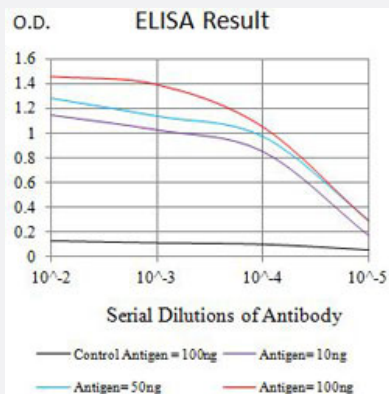
Catalog # MAB21442 Size 100 ug

Applications



Western Blot (Transfected lysate)

Western Blot analysis of Lane 1: HEK293 and Lane 2: IGSF2-hlgGfc transfected HEK293 cell lysates with IGSF2 monoclonal antibody, clone 8D4D3 (Cat # MAB21442).



Enzyme-linked Immunoabsorbent Assay

ELISA analysis with IGSF2 monoclonal antibody, clone 8D4D3 (Cat # MAB21442).

Specification

Product Description	Mouse monoclonal antibody raised against partial recombinant human IGSF2.
Immunogen	Recombinant protein corresponding to amino acids 22-168 of human IGSF2.
Host	Mouse
Theoretical MW (kDa)	115
Reactivity	Human
Form	Liquid

Isotype	IgG1
Recommend Usage	ELISA (1:10000) Western Blot (1:500-1:2000) The optimal working dilution should be determined by the end user.
Storage Buffer	In PBS (0.05% sodium azide).
Storage Instruction	Store at 4°C. For long term storage store at -20°C. Aliquot to avoid repeated freezing and thawing.
Note	This product contains sodium azide: a POISONOUS AND HAZARDOUS SUBSTANCE which should be handled by trained staff only.

Applications

- Western Blot (Transfected lysate)

Western Blot analysis of Lane 1: HEK293 and Lane 2: IGSF2-hlgGfc transfected HEK293 cell lysates with IGSF2 monoclonal antibody, clone 8D4D3 (Cat # MAB21442).

- Enzyme-linked Immunoabsorbent Assay

ELISA analysis with IGSF2 monoclonal antibody, clone 8D4D3 (Cat # MAB21442).

Gene Info — IGSF2

Entrez GeneID	9398
Protein Accession#	Q93033
Gene Name	IGSF2
Gene Alias	CD101, V7
Gene Description	immunoglobulin superfamily, member 2
Omim ID	604516
Gene Ontology	Hyperlink
Gene Summary	O
Other Designations	OTTHUMP00000013817 leukocyte surface protein

Disease

- [Arthritis](#)
- [Genetic Predisposition to Disease](#)