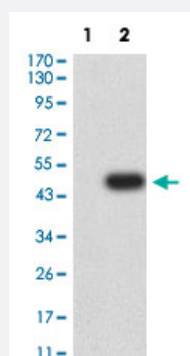


SETD8 monoclonal antibody, clone 7H1G10

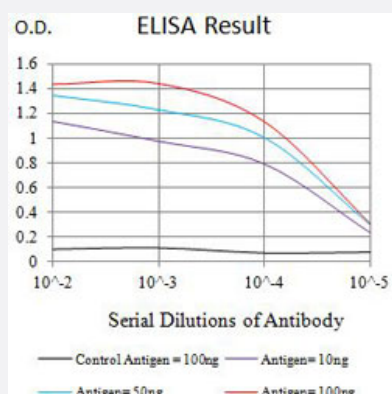
Catalog # MAB21440 Size 100 ug

Applications



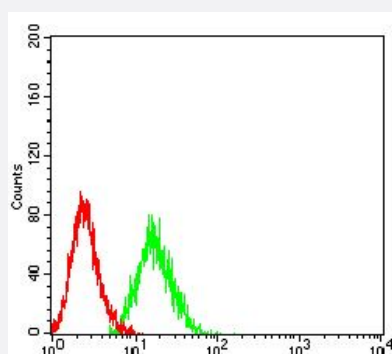
Western Blot (Transfected lysate)

Western Blot analysis of Lane 1: HEK293 and Lane 2: SETD8-hlgGFc transfected HEK293 cell lysates with SETD8 monoclonal antibody, clone 7H1G10 (Cat # MAB21440).



Enzyme-linked Immunoabsorbent Assay

ELISA analysis with SETD8 monoclonal antibody, clone 7H1G10 (Cat # MAB21440).



Flow Cytometry

Flow cytometric analysis of HL-60 cells with SETD8 monoclonal antibody, clone 7H1G10 (Cat # MAB21440) (Green). Red: Negative Control.

Specification

Product Description	Mouse monoclonal antibody raised against partial recombinant human SETD8.
Immunogen	Recombinant protein corresponding to amino acids 109-272 of human SETD8.
Host	Mouse
Theoretical MW (kDa)	42.9
Reactivity	Human
Form	Liquid
Isotype	IgG1
Recommend Usage	ELISA (1:10000) Flow Cytometry (1:200-1:400) Immunocytochemistry (1:200-1:500) Western Blot (1:500-1:2000) The optimal working dilution should be determined by the end user.
Storage Buffer	In PBS (0.05% sodium azide).
Storage Instruction	Store at 4°C. For long term storage store at -20°C. Aliquot to avoid repeated freezing and thawing.
Note	This product contains sodium azide: a POISONOUS AND HAZARDOUS SUBSTANCE which should be handled by trained staff only.

Applications

- Western Blot (Transfected lysate)

Western Blot analysis of Lane 1: HEK293 and Lane 2: SETD8-hlgGfc transfected HEK293 cell lysates with SETD8 monoclonal antibody, clone 7H1G10 (Cat # MAB21440).

- Immunocytochemistry

- Enzyme-linked Immunoabsorbent Assay

ELISA analysis with SETD8 monoclonal antibody, clone 7H1G10 (Cat # MAB21440).

- Flow Cytometry

Flow cytometric analysis of HL-60 cells with SETD8 monoclonal antibody, clone 7H1G10 (Cat # MAB21440) (Green). Red: Negative Control.

Gene Info — SETD8

Entrez GeneID	387893
Protein Accession#	Q9NQR1
Gene Name	SETD8
Gene Alias	KMT5A, PR-Set7, SET07, SET8
Gene Description	SET domain containing (lysine methyltransferase) 8
Omim ID	607240
Gene Ontology	Hyperlink
Other Designations	H4-K20-specific histone methyltransferase PR/SET domain containing protein 8 SET domain-containing protein 8

Pathway

- [Lysine degradation](#)

Disease

- [Breast Neoplasms](#)
- [Genetic Predisposition to Disease](#)