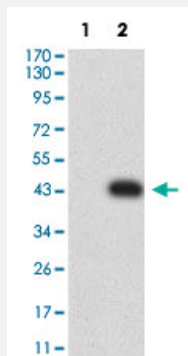


CD248 monoclonal antibody, clone 1H11A10

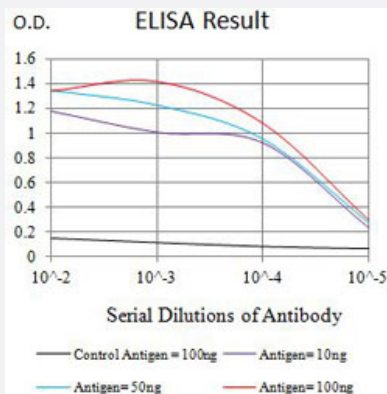
Catalog # MAB21437 Size 100 ug

Applications



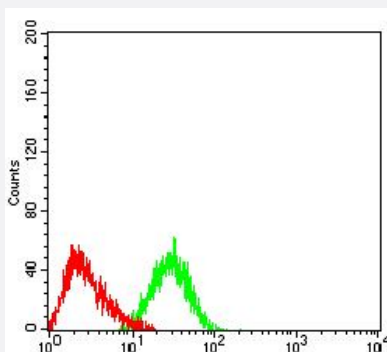
Western Blot (Transfected lysate)

Western Blot analysis of Lane 1: HEK293 and Lane 2: CD248-hlgGfC transfected HEK293 cell lysates with CD248 monoclonal antibody, clone 1H11A10 (Cat # MAB21437).



Enzyme-linked Immunoabsorbent Assay

ELISA analysis with CD248 monoclonal antibody, clone 1H11A10 (Cat # MAB21437).



Flow Cytometry

Flow cytometric analysis of HL-60 cells with CD248 monoclonal antibody, clone 1H11A10 (Cat # MAB21437) (Green). Red: Negative Control.

Specification

Product Description	Mouse monoclonal antibody raised against partial recombinant human CD248.
Immunogen	Recombinant protein corresponding to amino acids 18-180 of human CD248.
Host	Mouse
Theoretical MW (kDa)	80.9
Reactivity	Human
Form	Liquid
Isotype	IgG1
Recommend Usage	ELISA (1:10000) Flow Cytometry (1:200-1:400) Western Blot (1:500-1:2000) The optimal working dilution should be determined by the end user.
Storage Buffer	In PBS (0.05% sodium azide).
Storage Instruction	Store at 4°C. For long term storage store at -20°C. Aliquot to avoid repeated freezing and thawing.
Note	This product contains sodium azide: a POISONOUS AND HAZARDOUS SUBSTANCE which should be handled by trained staff only.

Applications

- Western Blot (Transfected lysate)

Western Blot analysis of Lane 1: HEK293 and Lane 2: CD248-hlgGFc transfected HEK293 cell lysates with CD248 monoclonal antibody, clone 1H11A10 (Cat # MAB21437).

- Enzyme-linked Immunoabsorbent Assay

ELISA analysis with CD248 monoclonal antibody, clone 1H11A10 (Cat # MAB21437).

- Flow Cytometry

Flow cytometric analysis of HL-60 cells with CD248 monoclonal antibody, clone 1H11A10 (Cat # MAB21437) (Green). Red: Negative Control.

Gene Info — CD248

Entrez GeneID [57124](#)

Protein Accession# [Q9HCU0](#)

Gene Name	CD248
Gene Alias	CD164L1, MGC119478, MGC119479, TEM1
Gene Description	CD248 molecule, endosialin
Omim ID	606064
Gene Ontology	Hyperlink
Gene Summary	O
Other Designations	2610111G01Rik CD164 sialomucin-like 1 CD248 antigen, endosialin endosialin tumor endothelial marker 1

Disease

- [Kidney Failure](#)