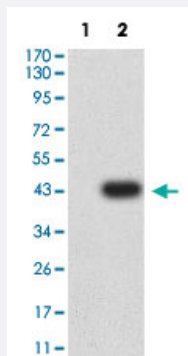


ADAM8 monoclonal antibody, clone 2C1F3

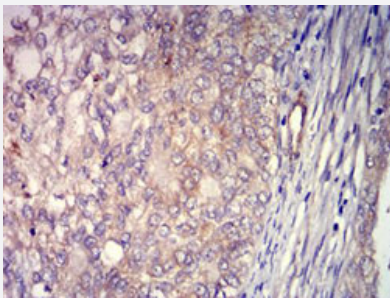
Catalog # MAB21426 Size 100 ug

Applications



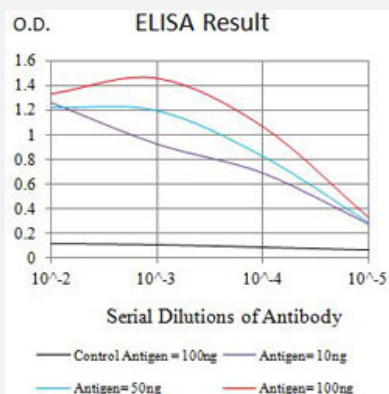
Western Blot (Transfected lysate)

Western Blot analysis of Lane 1: HEK293 and Lane 2: ADAM8-hlgGfc transfected HEK293 cell lysates with ADAM8 monoclonal antibody, clone 2C1F3 (Cat # MAB21426).



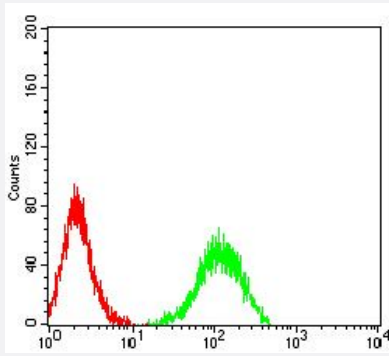
Immunohistochemistry (Formalin/PFA-fixed paraffin-embedded sections)

Immunohistochemical staining (Formalin-fixed paraffin-embedded sections) of human cervix cancer with ADAM8 monoclonal antibody, clone 2C1F3 (Cat # MAB21426).



Enzyme-linked Immunoabsorbent Assay

ELISA analysis with ADAM8 monoclonal antibody, clone 2C1F3 (Cat # MAB21426).



Flow Cytometry

Flow cytometric analysis of HL-60 cells with ADAM8 monoclonal antibody, clone 2C1F3 (Cat # MAB21426) (Green). Red: Negative Control.

Specification

Product Description	Mouse monoclonal antibody raised against partial recombinant human ADAM8.
Immunogen	Recombinant protein corresponding to amino acids 17-156 of human ADAM8.
Host	Mouse
Theoretical MW (kDa)	88.8
Reactivity	Human
Form	Liquid
Isotype	IgG2a
Recommend Usage	ELISA (1:10000) Flow Cytometry (1:200-1:400) Immunocytochemistry (1:200-1:500) Immunohistochemistry (Formalin/PFA-fixed paraffin-embedded sections) (1:200-1:1000) Western Blot (1:500-1:2000) The optimal working dilution should be determined by the end user.
Storage Buffer	In PBS (0.05% sodium azide).
Storage Instruction	Store at 4°C. For long term storage store at -20°C. Aliquot to avoid repeated freezing and thawing.
Note	This product contains sodium azide: a POISONOUS AND HAZARDOUS SUBSTANCE which should be handled by trained staff only.

Applications

- Western Blot (Transfected lysate)

Western Blot analysis of Lane 1: HEK293 and Lane 2: ADAM8-hlgFc transfected HEK293 cell lysates with ADAM8 monoclonal antibody, clone 2C1F3 (Cat # MAB21426).

- Immunohistochemistry (Formalin/PFA-fixed paraffin-embedded sections)

Immunohistochemical staining (Formalin-fixed paraffin-embedded sections) of human cervix cancer with ADAM8 monoclonal antibody, clone 2C1F3 (Cat # MAB21426).

- Immunocytochemistry

- Enzyme-linked Immunoabsorbent Assay

ELISA analysis with ADAM8 monoclonal antibody, clone 2C1F3 (Cat # MAB21426).

- Flow Cytometry

Flow cytometric analysis of HL-60 cells with ADAM8 monoclonal antibody, clone 2C1F3 (Cat # MAB21426) (Green). Red: Negative Control.

Gene Info — ADAM8

Entrez GeneID [101](#)

Protein Accession# [P78325](#)

Gene Name ADAM8

Gene Alias CD156, MGC134985, MS2

Gene Description ADAM metallopeptidase domain 8

Omim ID [602267](#)

Gene Ontology [Hyperlink](#)

Gene Summary This gene encodes a member of the ADAM (a disintegrin and metalloprotease domain) family. Members of this family are membrane-anchored proteins structurally related to snake venom disintegrins, and have been implicated in a variety of biological processes involving cell-cell and cell-matrix interactions, including fertilization, muscle development, and neurogenesis. The protein encoded by this gene may be involved in cell adhesion during neurodegeneration, and it is thought to be a target for allergic respiratory diseases, including asthma. Alternative splicing results in multiple transcript variants. [provided by RefSeq]

Other Designations CD156a antigen|OTTHUMP00000020792|a disintegrin and metalloproteinase domain 8|cell surface antigen MS2

Disease

- [Alzheimer Disease](#)
- [Asthma](#)
- [Genetic Predisposition to Disease](#)
- [Hypersensitivity](#)
- [Ovarian Neoplasms](#)