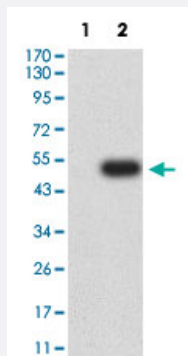


CD302 monoclonal antibody, clone 6B1F6

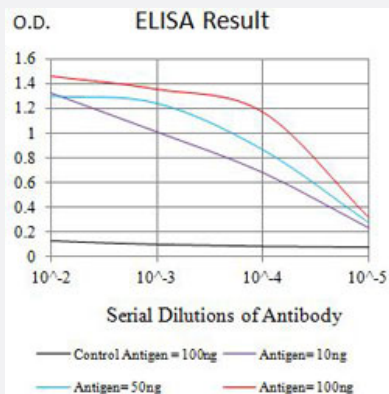
Catalog # MAB21413 Size 100 ug

Applications



Western Blot (Transfected lysate)

Western Blot analysis of Lane 1: HEK293 and Lane 2: CD302-hlgGfC transfected HEK293 cell lysates with CD302 monoclonal antibody, clone 6B1F6 (Cat # MAB21413).



Enzyme-linked Immunoabsorbent Assay

ELISA analysis with CD302 monoclonal antibody, clone 6B1F6 (Cat # MAB21413).

Specification

Product Description	Mouse monoclonal antibody raised against partial recombinant human CD302.
Immunogen	Recombinant protein corresponding to amino acids 23-168 of human CD302.
Host	Mouse
Theoretical MW (kDa)	26.2
Reactivity	Human
Form	Liquid

Isotype	IgG1
Recommend Usage	ELISA (1:10000) Western Blot (1:500-1:2000) The optimal working dilution should be determined by the end user.
Storage Buffer	In PBS (0.05% sodium azide).
Storage Instruction	Store at 4°C. For long term storage store at -20°C. Aliquot to avoid repeated freezing and thawing.
Note	This product contains sodium azide: a POISONOUS AND HAZARDOUS SUBSTANCE which should be handled by trained staff only.

Applications

- Western Blot (Transfected lysate)

Western Blot analysis of Lane 1: HEK293 and Lane 2: CD302-hlgGfC transfected HEK293 cell lysates with CD302 monoclonal antibody, clone 6B1F6 (Cat # MAB21413).

- Enzyme-linked Immunoabsorbent Assay

ELISA analysis with CD302 monoclonal antibody, clone 6B1F6 (Cat # MAB21413).

Gene Info — CD302

Entrez GeneID	9936
Protein Accession#	Q8IX05
Gene Name	CD302
Gene Alias	BIMLEC, CLEC13A, DCL-1, DCL1, KIAA0022
Gene Description	CD302 molecule
Gene Ontology	Hyperlink
Gene Summary	CD302 is a C-type lectin receptor involved in cell adhesion and migration, as well as endocytosis and phagocytosis (Kato et al., 2007 [PubMed 17947679]).[supplied by OMIM]
Other Designations	C-type lectin BIMLEC C-type lectin domain family 13, member A CD302 antigen type I transmembrane C-type lectin receptor DCL-1