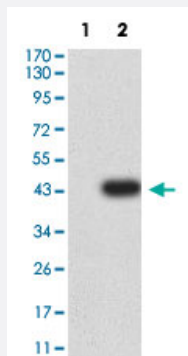


ITGA5 monoclonal antibody, clone 8D1G12

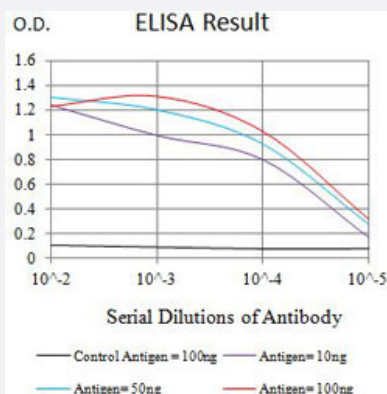
Catalog # MAB21390 Size 100 ug

Applications



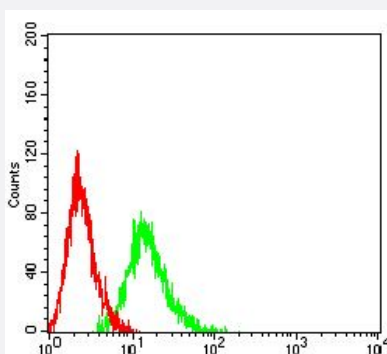
Western Blot (Transfected lysate)

Western Blot analysis of Lane 1: HEK293 and Lane 2: ITGA5-hlgGfc transfected HEK293 cell lysates with ITGA5 monoclonal antibody, clone 8D1G12 (Cat # MAB21390).



Enzyme-linked Immunoabsorbent Assay

ELISA analysis with ITGA5 monoclonal antibody, clone 8D1G12 (Cat # MAB21390).



Flow Cytometry

Flow cytometric analysis of HL-60 cells with ITGA5 monoclonal antibody, clone 8D1G12 (Cat # MAB21390) (Green). Red: Negative Control.

Specification

Product Description	Mouse monoclonal antibody raised against partial recombinant human ITGA5.
Immunogen	Recombinant protein corresponding to amino acids 111-253 of human ITGA5.
Host	Mouse
Theoretical MW (kDa)	114.5
Reactivity	Human
Form	Liquid
Isotype	IgG1
Recommend Usage	ELISA (1:10000) Flow Cytometry (1:200-1:400) Western Blot (1:500-1:2000) The optimal working dilution should be determined by the end user.
Storage Buffer	In PBS (0.05% sodium azide).
Storage Instruction	Store at 4°C. For long term storage store at -20°C. Aliquot to avoid repeated freezing and thawing.
Note	This product contains sodium azide: a POISONOUS AND HAZARDOUS SUBSTANCE which should be handled by trained staff only.

Applications

- Western Blot (Transfected lysate)

Western Blot analysis of Lane 1: HEK293 and Lane 2: ITGA5-hlgGfc transfected HEK293 cell lysates with ITGA5 monoclonal antibody, clone 8D1G12 (Cat # MAB21390).

- Enzyme-linked Immunoabsorbent Assay

ELISA analysis with ITGA5 monoclonal antibody, clone 8D1G12 (Cat # MAB21390).

- Flow Cytometry

Flow cytometric analysis of HL-60 cells with ITGA5 monoclonal antibody, clone 8D1G12 (Cat # MAB21390) (Green). Red: Negative Control.

Gene Info — ITGA5

Entrez GeneID [3678](#)

Protein Accession# [P08648](#)

Gene Name	ITGA5
Gene Alias	CD49e, FNRA, VLA5A
Gene Description	integrin, alpha 5 (fibronectin receptor, alpha polypeptide)
Omim ID	135620
Gene Ontology	Hyperlink
Gene Summary	<p>The product of this gene belongs to the integrin alpha chain family. Integrins are heterodimeric integral membrane proteins composed of an alpha chain and a beta chain. This gene encodes the integrin alpha 5 chain. Alpha chain 5 undergoes post-translational cleavage in the extracellular domain to yield disulfide-linked light and heavy chains that join with beta 1 to form a fibronectin receptor. In addition to adhesion, integrins are known to participate in cell-surface mediated signalling.</p> <p>[provided by RefSeq]</p>
Other Designations	fibronectin receptor, alpha subunit integrin alpha 5 very late activation protein 5, alpha subunit

Pathway

- [Arrhythmogenic right ventricular cardiomyopathy \(ARVC\)](#)
- [ECM-receptor interaction](#)
- [Focal adhesion](#)
- [Hematopoietic cell lineage](#)
- [Hypertrophic cardiomyopathy \(HCM\)](#)
- [Regulation of actin cytoskeleton](#)

Disease

- [Tobacco Use Disorder](#)