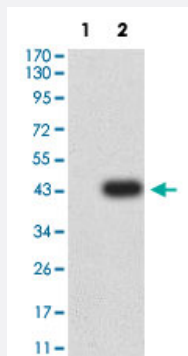


# LILRB5 monoclonal antibody, clone 6D3C8

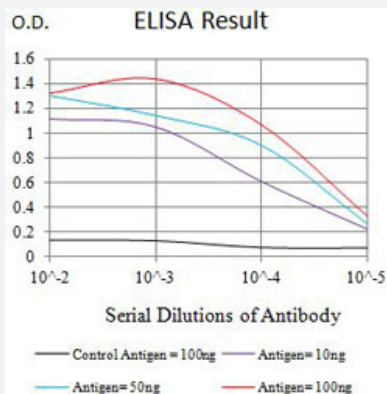
Catalog # MAB21372      Size 100 ug

## Applications



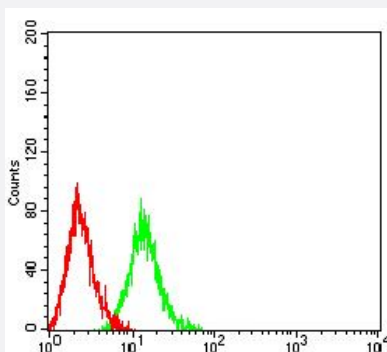
### Western Blot (Transfected lysate)

Western Blot analysis of Lane 1: HEK293 and Lane 2: LILRB5-hlgGf transfected HEK293 cell lysates with LILRB5 monoclonal antibody, clone 6D3C8 (Cat # MAB21372).



### Enzyme-linked Immunoabsorbent Assay

ELISA analysis with LILRB5 monoclonal antibody, clone 6D3C8 (Cat # MAB21372).



### Flow Cytometry

Flow cytometric analysis of HL-60 cells with LILRB5 monoclonal antibody, clone 6D3C8 (Cat # MAB21372) (Green). Red: Negative Control.

## Specification

<b>Product Description</b>	Mouse monoclonal antibody raised against partial recombinant human LILRB5.
<b>Immunogen</b>	Recombinant protein corresponding to amino acids 24-164 of human LILRB5.
<b>Host</b>	Mouse
<b>Theoretical MW (kDa)</b>	64.1
<b>Reactivity</b>	Human
<b>Form</b>	Liquid
<b>Isotype</b>	IgG1
<b>Recommend Usage</b>	ELISA (1:10000) Flow Cytometry (1:200-1:400) Western Blot (1:500-1:2000) The optimal working dilution should be determined by the end user.
<b>Storage Buffer</b>	In PBS (0.05% sodium azide).
<b>Storage Instruction</b>	Store at 4°C. For long term storage store at -20°C. Aliquot to avoid repeated freezing and thawing.
<b>Note</b>	This product contains sodium azide: a POISONOUS AND HAZARDOUS SUBSTANCE which should be handled by trained staff only.

## Applications

- Western Blot (Transfected lysate)

Western Blot analysis of Lane 1: HEK293 and Lane 2: LILRB5-hlgGfC transfected HEK293 cell lysates with LILRB5 monoclonal antibody, clone 6D3C8 (Cat # MAB21372).

- Enzyme-linked Immunoabsorbent Assay

ELISA analysis with LILRB5 monoclonal antibody, clone 6D3C8 (Cat # MAB21372).

- Flow Cytometry

Flow cytometric analysis of HL-60 cells with LILRB5 monoclonal antibody, clone 6D3C8 (Cat # MAB21372) (Green). Red: Negative Control.

## Gene Info — LILRB5

**Entrez GeneID** [10990](#)

**Protein Accession#** [O75023](#)

Gene Name	LILRB5
Gene Alias	CD85C, LIR-8, LIR8
Gene Description	leukocyte immunoglobulin-like receptor, subfamily B (with TM and ITIM domains), member 5
Omim ID	<a href="#">604814</a>
Gene Ontology	<a href="#">Hyperlink</a>
Gene Summary	<p>This gene is a member of the leukocyte immunoglobulin-like receptor (LIR) family, which is found in a gene cluster at chromosomal region 19q13.4. The encoded protein belongs to the subfamily B class of LIR receptors which contain two or four extracellular immunoglobulin domains, a transmembrane domain, and two to four cytoplasmic immunoreceptor tyrosine-based inhibitory motifs (ITIMs). Several other LIR subfamily B receptors are expressed on immune cells where they bind to MHC class I molecules on antigen-presenting cells and inhibit stimulation of an immune response. Multiple transcript variants encoding different isoforms have been found for this gene. [provided by RefSeq]</p>
Other Designations	leukocyte immunoglobulin-like receptor 8 leukocyte immunoglobulin-like receptor, subfamily B, member 5