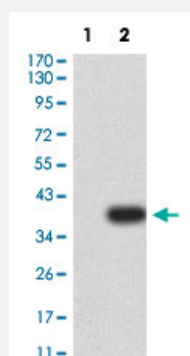


S1PR1 monoclonal antibody, clone 8E4H5

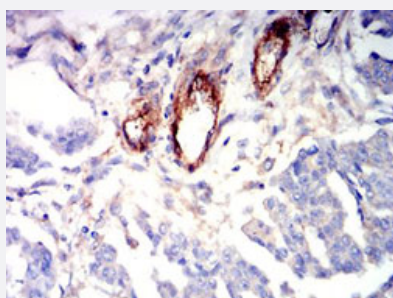
Catalog # MAB21370 Size 100 ug

Applications



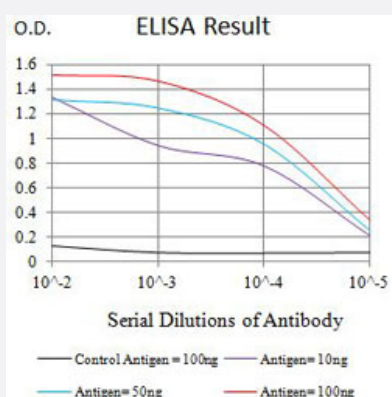
Western Blot (Transfected lysate)

Western Blot analysis of Lane 1: HEK293 and Lane 2: S1PR1-hlgGfC transfected HEK293 cell lysates with S1PR1 monoclonal antibody, clone 8E4H5 (Cat # MAB21370).



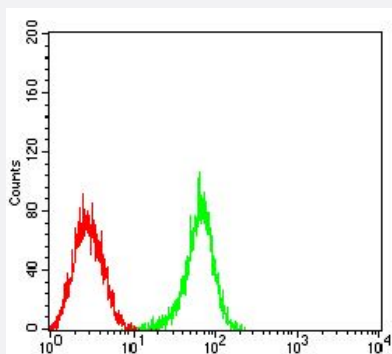
Immunohistochemistry (Formalin/PFA-fixed paraffin-embedded sections)

Immunohistochemical staining (Formalin-fixed paraffin-embedded sections) of human ovarian cancer with S1PR1 monoclonal antibody, clone 8E4H5 (Cat # MAB21370).



Enzyme-linked Immunoabsorbent Assay

ELISA analysis with S1PR1 monoclonal antibody, clone 8E4H5 (Cat # MAB21370).



Flow Cytometry

Flow cytometric analysis of HL-60 cells with S1PR1 monoclonal antibody, clone 8E4H5 (Cat # MAB21370) (Green). Red: Negative Control.

Specification

Product Description	Mouse monoclonal antibody raised against partial recombinant human S1PR1.
Immunogen	Recombinant protein corresponding to human S1PR1.
Host	Mouse
Theoretical MW (kDa)	42.8
Reactivity	Human
Form	Liquid
Isotype	IgG2a
Recommend Usage	ELISA (1:10000) Flow Cytometry (1:200-1:400) Immunohistochemistry (Formalin/PFA-fixed paraffin-embedded sections) (1:200-1:1000) Western Blot (1:500-1:2000) The optimal working dilution should be determined by the end user.
Storage Buffer	In PBS (0.05% sodium azide).
Storage Instruction	Store at 4°C. For long term storage store at -20°C. Aliquot to avoid repeated freezing and thawing.
Note	This product contains sodium azide: a POISONOUS AND HAZARDOUS SUBSTANCE which should be handled by trained staff only.

Applications

- Western Blot (Transfected lysate)

Western Blot analysis of Lane 1: HEK293 and Lane 2: S1PR1-hlgGfc transfected HEK293 cell lysates with S1PR1 monoclonal antibody, clone 8E4H5 (Cat # MAB21370).

- Immunohistochemistry (Formalin/PFA-fixed paraffin-embedded sections)

Immunohistochemical staining (Formalin-fixed paraffin-embedded sections) of human ovarian cancer with S1PR1 monoclonal antibody, clone 8E4H5 (Cat # MAB21370).

- Enzyme-linked Immunoabsorbent Assay

ELISA analysis with S1PR1 monoclonal antibody, clone 8E4H5 (Cat # MAB21370).

- Flow Cytometry

Flow cytometric analysis of HL-60 cells with S1PR1 monoclonal antibody, clone 8E4H5 (Cat # MAB21370) (Green). Red: Negative Control.

Gene Info — S1PR1

Entrez GeneID [1901](#)

Protein Accession# [P21453](#)

Gene Name S1PR1

Gene Alias CHEDG1, D1S3362, ECGF1, EDG-1, EDG1, FLJ58121, S1P1

Gene Description sphingosine-1-phosphate receptor 1

Omim ID [601974](#)

Gene Ontology [Hyperlink](#)

Gene Summary The protein encoded by this gene is structurally similar to G protein-coupled receptors and is highly expressed in endothelial cells. It binds the ligand sphingosine-1-phosphate with high affinity and high specificity, and suggested to be involved in the processes that regulate the differentiation of endothelial cells. Activation of this receptor induces cell-cell adhesion. [provided by RefSeq]

Other Designations G protein-coupled sphingolipid receptor[OTTHUMP00000012525]endothelial differentiation, sphingolipid G-protein-coupled receptor, 1[sphingosine 1-phosphate receptor EDG1]

Pathway

- [Neuroactive ligand-receptor interaction](#)

Disease

- [Asthma](#)
- [Atherosclerosis](#)
- [Brain Ischemia](#)
- [Calcinosis](#)
- [Cardiovascular Diseases](#)
- [Coronary Artery Disease](#)
- [Coronary Disease](#)
- [Diabetes Mellitus](#)
- [Edema](#)
- [Genetic Predisposition to Disease](#)
- [Myocardial Infarction](#)
- [Stroke](#)