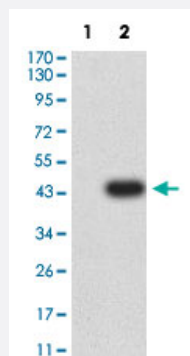


CD97 monoclonal antibody, clone 6D7E6

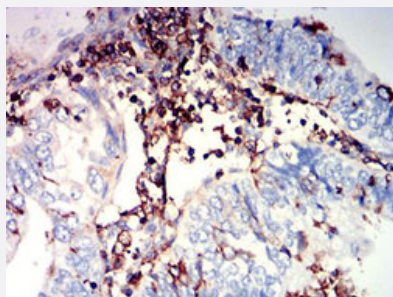
Catalog # MAB21366 Size 100 ug

Applications



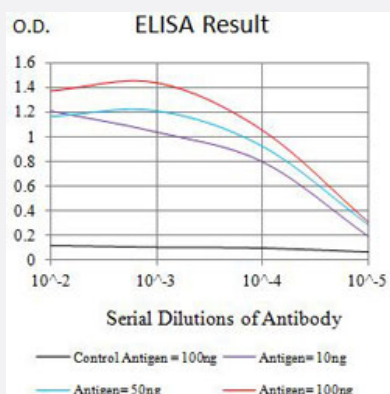
Western Blot (Transfected lysate)

Western Blot analysis of Lane 1: HEK293 and Lane 2: CD97-hlgGfc transfected HEK293 cell lysates with CD97 monoclonal antibody, clone 6D7E6 (Cat # MAB21366).



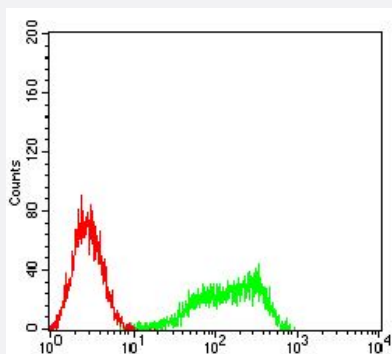
Immunohistochemistry (Formalin/PFA-fixed paraffin-embedded sections)

Immunohistochemical staining (Formalin-fixed paraffin-embedded sections) of human endometrium cancer with CD97 monoclonal antibody, clone 6D7E6 (Cat # MAB21366).



Enzyme-linked Immunoabsorbent Assay

ELISA analysis with CD97 monoclonal antibody, clone 6D7E6 (Cat # MAB21366).



Flow Cytometry

Flow cytometric analysis of HL-60 cells with CD97 monoclonal antibody, clone 6D7E6 (Cat # MAB21366) (Green). Red: Negative Control.

Specification

Product Description	Mouse monoclonal antibody raised against partial recombinant human CD97.
Immunogen	Recombinant protein corresponding to amino acids 419-552 of human CD97.
Host	Mouse
Theoretical MW (kDa)	91.8
Reactivity	Human
Form	Liquid
Isotype	IgG2a
Recommend Usage	ELISA (1:10000) Flow Cytometry (1:200-1:400) Immunohistochemistry (Formalin/PFA-fixed paraffin-embedded sections) (1:200-1:1000) Western Blot (1:500-1:2000) The optimal working dilution should be determined by the end user.
Storage Buffer	In PBS (0.05% sodium azide).
Storage Instruction	Store at 4°C. For long term storage store at -20°C. Aliquot to avoid repeated freezing and thawing.
Note	This product contains sodium azide: a POISONOUS AND HAZARDOUS SUBSTANCE which should be handled by trained staff only.

Applications

- Western Blot (Transfected lysate)

Western Blot analysis of Lane 1: HEK293 and Lane 2: CD97-hlgGfc transfected HEK293 cell lysates with CD97 monoclonal antibody, clone 6D7E6 (Cat # MAB21366).

- Immunohistochemistry (Formalin/PFA-fixed paraffin-embedded sections)

Immunohistochemical staining (Formalin-fixed paraffin-embedded sections) of human endometrium cancer with CD97 monoclonal antibody, clone 6D7E6 (Cat # MAB21366).

- Enzyme-linked Immunoabsorbent Assay

ELISA analysis with CD97 monoclonal antibody, clone 6D7E6 (Cat # MAB21366).

- Flow Cytometry

Flow cytometric analysis of HL-60 cells with CD97 monoclonal antibody, clone 6D7E6 (Cat # MAB21366) (Green). Red: Negative Control.

Gene Info — CD97

Entrez GeneID [976](#)

Protein Accession# [P48960](#)

Gene Name CD97

Gene Alias TM7LN1

Gene Description CD97 molecule

Omim ID [601211](#)

Gene Ontology [Hyperlink](#)

Gene Summary This gene is a member of the EGF-TM7 family of class II seven-span transmembrane (7-TM) molecules, likely encoded by a gene cluster on the short arm of chromosome 19. The encoded product is a glycoprotein that is present on the surface of most activated leukocytes and spans the membrane seven times, which is a defining feature of G protein-coupled receptors. The protein has an extended extracellular region with several N-terminal epidermal growth factor (EGF)-like domains, which mediate binding to its cellular ligand, decay accelerating factor (DAF, CD55), a regulatory protein of the complement cascade. The presence of structural features characteristic of extracellular matrix proteins and transmembrane proteins suggests that this protein is a receptor involved in both cell adhesion and signaling processes early after leukocyte activation. Alternative splicing has been observed for this gene and three variants have been found. [provided by RefSeq]

Other Designations CD97 antigen|leukocyte antigen CD97|seven transmembrane helix receptor|seven-span transmembrane protein|seven-transmembrane, heterodimeric receptor associated with inflammation

Disease

- [Cardiovascular Diseases](#)
- [Diabetes Mellitus](#)
- [Edema](#)
- [Kidney Failure](#)