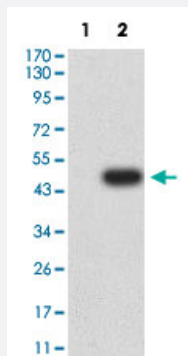


# CLEC12A monoclonal antibody, clone 4D5A8

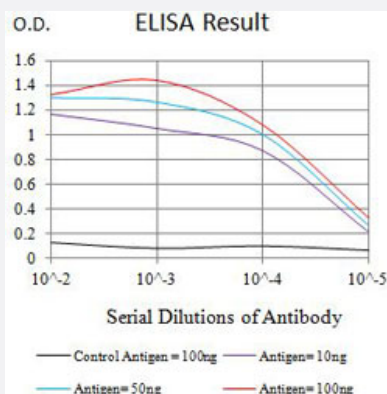
Catalog # MAB21364      Size 100 ug

## Applications



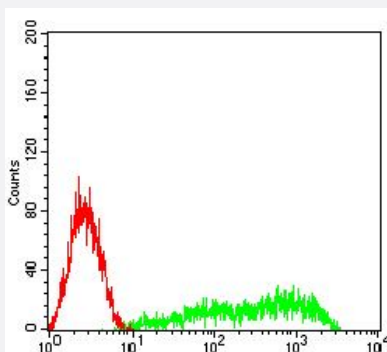
### Western Blot (Transfected lysate)

Western Blot analysis of Lane 1: HEK293 and Lane 2: CLEC12A-hlgGfC transfected HEK293 cell lysates with CLEC12A monoclonal antibody, clone 4D5A8 (Cat # MAB21364).



### Enzyme-linked Immunoabsorbent Assay

ELISA analysis with CLEC12A monoclonal antibody, clone 4D5A8 (Cat # MAB21364).



### Flow Cytometry

Flow cytometric analysis of HL-60 cells with CLEC12A monoclonal antibody, clone 4D5A8 (Cat # MAB21364) (Green). Red: Negative Control.

## Specification

Product Description	Mouse monoclonal antibody raised against partial recombinant human CLEC12A.
Immunogen	Recombinant protein corresponding to amino acids 65-265 of human CLEC12A.
Host	Mouse
Theoretical MW (kDa)	30.8
Reactivity	Human
Form	Liquid
Isotype	IgG2a
Recommend Usage	ELISA (1:10000) Flow Cytometry (1:200-1:400) Immunocytochemistry (1:200-1:500) Western Blot (1:500-1:2000) The optimal working dilution should be determined by the end user.
Storage Buffer	In PBS (0.05% sodium azide).
Storage Instruction	Store at 4°C. For long term storage store at -20°C. Aliquot to avoid repeated freezing and thawing.
Note	This product contains sodium azide: a POISONOUS AND HAZARDOUS SUBSTANCE which should be handled by trained staff only.

## Applications

- Western Blot (Transfected lysate)

Western Blot analysis of Lane 1: HEK293 and Lane 2: CLEC12A-hlgGfC transfected HEK293 cell lysates with CLEC12A monoclonal antibody, clone 4D5A8 (Cat # MAB21364).

- Immunocytochemistry

- Enzyme-linked Immunoabsorbent Assay

ELISA analysis with CLEC12A monoclonal antibody, clone 4D5A8 (Cat # MAB21364).

- Flow Cytometry

Flow cytometric analysis of HL-60 cells with CLEC12A monoclonal antibody, clone 4D5A8 (Cat # MAB21364) (Green). Red: Negative Control.

## Gene Info — CLEC12A

Entrez GeneID	<a href="#">160364</a>
Protein Accession#	<a href="#">Q5QGZ9</a>
Gene Name	CLEC12A
Gene Alias	CLL-1, CLL1, DCAL-2, MGC70602, MICL
Gene Description	C-type lectin domain family 12, member A
Gene Ontology	<a href="#">Hyperlink</a>
Gene Summary	<p>This gene encodes a member of the C-type lectin/C-type lectin-like domain (CTL/CTLD) superfamily. Members of this family share a common protein fold and have diverse functions, such as cell adhesion, cell-cell signalling, glycoprotein turnover, and roles in inflammation and immune response. The protein encoded by this gene is a negative regulator of granulocyte and monocyte function. Several alternatively spliced transcript variants of this gene have been described, but the full-length nature of some of these variants has not been determined. This gene is closely linked to other CTL/CTLD superfamily members in the natural killer gene complex region on chromosome 12p13. [provided by RefSeq]</p>
Other Designations	C-type lectin protein CLL-1 C-type lectin superfamily C-type lectin-like molecule-1 dendritic cell associated lectin 2 myeloid inhibitory C-type lectin-like receptor