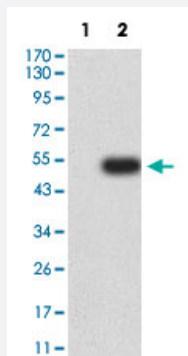


FCAMR monoclonal antibody, clone 5B1D12E1

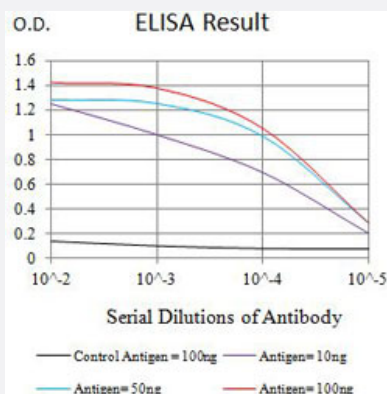
Catalog # MAB21362 Size 100 ug

Applications



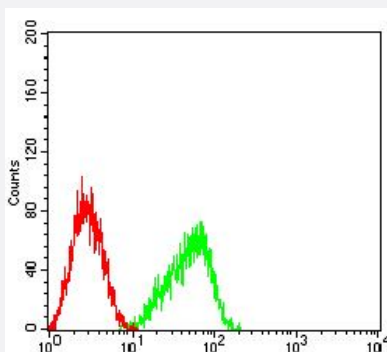
Western Blot (Transfected lysate)

Western Blot analysis of Lane 1: HEK293 and Lane 2: FCAMR-hlgGFc transfected HEK293 cell lysates with FCAMR monoclonal antibody, clone 5B1D12E1 (Cat # MAB21362).



Enzyme-linked Immunoabsorbent Assay

ELISA analysis with FCAMR monoclonal antibody, clone 5B1D12E1 (Cat # MAB21362).



Flow Cytometry

Flow cytometric analysis of HL-60 cells with FCAMR monoclonal antibody, clone 5B1D12E1 (Cat # MAB21362) (Green). Red: Negative Control.

Specification

Product Description	Mouse monoclonal antibody raised against partial recombinant human FCAMR.
Immunogen	Recombinant protein corresponding to amino acids 221-450 of human FCAMR.
Host	Mouse
Theoretical MW (kDa)	57.1
Reactivity	Human
Form	Liquid
Isotype	IgG1
Recommend Usage	ELISA (1:10000) Flow Cytometry (1:200-1:400) Western Blot (1:500-1:2000) The optimal working dilution should be determined by the end user.
Storage Buffer	In PBS (0.05% sodium azide).
Storage Instruction	Store at 4°C. For long term storage store at -20°C. Aliquot to avoid repeated freezing and thawing.
Note	This product contains sodium azide: a POISONOUS AND HAZARDOUS SUBSTANCE which should be handled by trained staff only.

Applications

- Western Blot (Transfected lysate)

Western Blot analysis of Lane 1: HEK293 and Lane 2: FCAMR-hlgGFc transfected HEK293 cell lysates with FCAMR monoclonal antibody, clone 5B1D12E1 (Cat # MAB21362).

- Enzyme-linked Immunoabsorbent Assay

ELISA analysis with FCAMR monoclonal antibody, clone 5B1D12E1 (Cat # MAB21362).

- Flow Cytometry

Flow cytometric analysis of HL-60 cells with FCAMR monoclonal antibody, clone 5B1D12E1 (Cat # MAB21362) (Green). Red: Negative Control.

Gene Info — FCAMR

Entrez GeneID [83953](#)

Protein Accession# [Q8WWV6](#)

Gene Name	FCAMR
Gene Alias	FCA/MR, FKSG87
Gene Description	Fc receptor, IgA, IgM, high affinity
Omim ID	605484
Gene Ontology	Hyperlink
Gene Summary	<p>This gene encodes a member of the immunoglobulin receptor gene family involved in the microbial immune response. The protein localizes to the cell surface, where it functions as a receptor for IgM and IgA antibodies. The mouse homolog of this protein can bind and internalize IgM-coated particles, and mediates endocytosis of IgM-coated Staphylococcus by primary B lymphocytes. Alternatively spliced transcript variants have been described, but their biological validity has not been determined.</p>
Other Designations	Fc alpha/mu receptor immunity related factor receptor for Fc fragment of IgA and IgM

Disease

- [Tobacco Use Disorder](#)