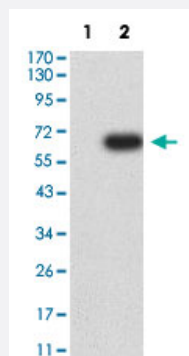


# SIGLEC6 monoclonal antibody, clone 3C11C12G1

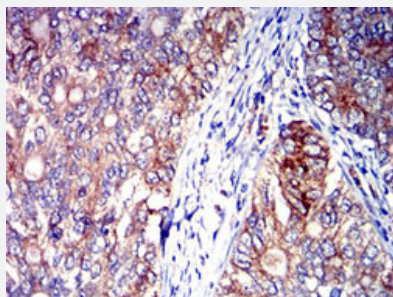
Catalog # MAB21358      Size 100 ug

## Applications



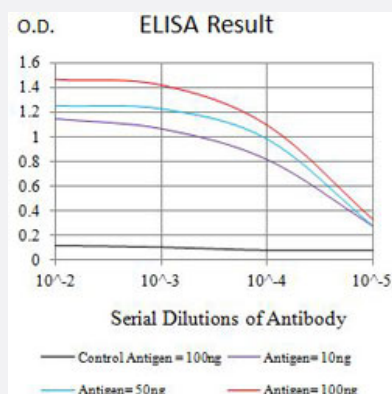
### Western Blot (Transfected lysate)

Western Blot analysis of Lane 1: HEK293 and Lane 2: SIGLEC6-hlgGfC transfected HEK293 cell lysates with SIGLEC6 monoclonal antibody, clone 3C11C12G1 (Cat # MAB21358).



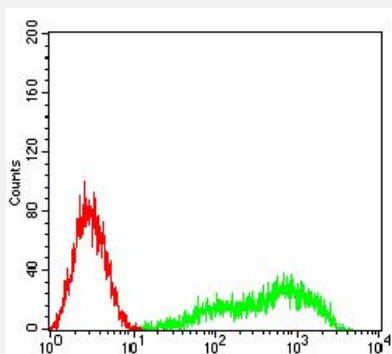
### Immunohistochemistry (Formalin/PFA-fixed paraffin-embedded sections)

Immunohistochemical staining (Formalin-fixed paraffin-embedded sections) of human cervix cancer with SIGLEC6 monoclonal antibody, clone 3C11C12G1 (Cat # MAB21358).



### Enzyme-linked Immunoabsorbent Assay

ELISA analysis with SIGLEC6 monoclonal antibody, clone 3C11C12G1 (Cat # MAB21358).



## Flow Cytometry

Flow cytometric analysis of HL-60 cells with SIGLEC6 monoclonal antibody, clone 3C11C12G1 (Cat # MAB21358) (Green). Red: Negative Control.

## Specification

<b>Product Description</b>	Mouse monoclonal antibody raised against partial recombinant human SIGLEC6.
<b>Immunogen</b>	Recombinant protein corresponding to amino acids 27-347 of human SIGLEC6.
<b>Host</b>	Mouse
<b>Theoretical MW (kDa)</b>	50
<b>Reactivity</b>	Human
<b>Form</b>	Liquid
<b>Isotype</b>	IgG2b
<b>Recommend Usage</b>	ELISA (1:10000) Flow Cytometry (1:200-1:400) Immunohistochemistry (Formalin/PFA-fixed paraffin-embedded sections) (1:200-1:1000) Western Blot (1:500-1:2000) The optimal working dilution should be determined by the end user.
<b>Storage Buffer</b>	In PBS (0.05% sodium azide).
<b>Storage Instruction</b>	Store at 4°C. For long term storage store at -20°C. Aliquot to avoid repeated freezing and thawing.
<b>Note</b>	This product contains sodium azide: a POISONOUS AND HAZARDOUS SUBSTANCE which should be handled by trained staff only.

## Applications

- Western Blot (Transfected lysate)

Western Blot analysis of Lane 1: HEK293 and Lane 2: SIGLEC6-hlgGFc transfected HEK293 cell lysates with SIGLEC6 monoclonal antibody, clone 3C11C12G1 (Cat # MAB21358).

- Immunohistochemistry (Formalin/PFA-fixed paraffin-embedded sections)

Immunohistochemical staining (Formalin-fixed paraffin-embedded sections) of human cervix cancer with SIGLEC6 monoclonal antibody, clone 3C11C12G1 (Cat # MAB21358).

- Enzyme-linked Immunoabsorbent Assay

ELISA analysis with SIGLEC6 monoclonal antibody, clone 3C11C12G1 (Cat # MAB21358).

- Flow Cytometry

Flow cytometric analysis of HL-60 cells with SIGLEC6 monoclonal antibody, clone 3C11C12G1 (Cat # MAB21358) (Green).  
Red: Negative Control.

## Gene Info — SIGLEC6

**Entrez GeneID** [946](#)

**Protein Accession#** [O43699](#)

**Gene Name** SIGLEC6

**Gene Alias** CD327, CD33L, CD33L1, CDw327, OBBP1, SIGLEC-6

**Gene Description** sialic acid binding Ig-like lectin 6

**Omim ID** [604405](#)

**Gene Ontology** [Hyperlink](#)

**Other Designations** CD33 antigen-like 1|CDw327 antigen|OTTHUMP00000164940|OTTHUMP00000164941|OTTHUMP00000164942|Obesity-binding protein 1