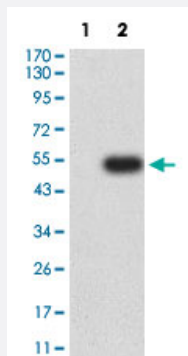


SLAMF8 monoclonal antibody, clone 6A4E2C4

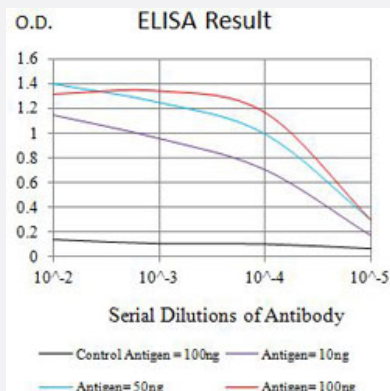
Catalog # MAB21357 Size 100 ug

Applications



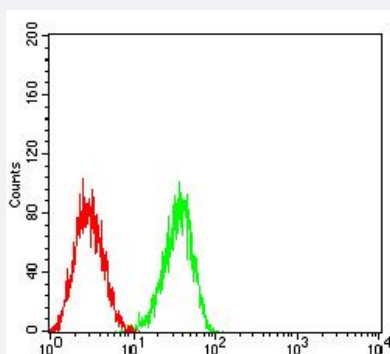
Western Blot (Transfected lysate)

Western Blot analysis of Lane 1: HEK293 and Lane 2: SLAMF8-hlgFc transfected HEK293 cell lysates with SLAMF8 monoclonal antibody, clone 6A4E2C4 (Cat # MAB21357).



Enzyme-linked Immunoabsorbent Assay

ELISA analysis with SLAMF8 monoclonal antibody, clone 6A4E2C4 (Cat # MAB21357).



Flow Cytometry

Flow cytometric analysis of HL-60 cells with SLAMF8 monoclonal antibody, clone 6A4E2C4 (Cat # MAB21357) (Green). Red: Negative Control.

Specification

Product Description	Mouse monoclonal antibody raised against partial recombinant human SLAMF8.
Immunogen	Recombinant protein corresponding to amino acids 23-233 of human SLAMF8.
Host	Mouse
Theoretical MW (kDa)	31.7
Reactivity	Human
Form	Liquid
Isotype	IgG2b
Recommend Usage	ELISA (1:10000) Flow Cytometry (1:200-1:400) Western Blot (1:500-1:2000) The optimal working dilution should be determined by the end user.
Storage Buffer	In PBS (0.05% sodium azide).
Storage Instruction	Store at 4°C. For long term storage store at -20°C. Aliquot to avoid repeated freezing and thawing.
Note	This product contains sodium azide: a POISONOUS AND HAZARDOUS SUBSTANCE which should be handled by trained staff only.

Applications

- Western Blot (Transfected lysate)

Western Blot analysis of Lane 1: HEK293 and Lane 2: SLAMF8-hlgGfc transfected HEK293 cell lysates with SLAMF8 monoclonal antibody, clone 6A4E2C4 (Cat # MAB21357).

- Enzyme-linked Immunoabsorbent Assay

ELISA analysis with SLAMF8 monoclonal antibody, clone 6A4E2C4 (Cat # MAB21357).

- Flow Cytometry

Flow cytometric analysis of HL-60 cells with SLAMF8 monoclonal antibody, clone 6A4E2C4 (Cat # MAB21357) (Green). Red: Negative Control.

Gene Info — SLAMF8

Entrez GeneID [56833](#)

Protein Accession# [Q9P0V8](#)

Gene Name	SLAMF8
Gene Alias	BLAME, FLJ20442, MGC129578, SBB42
Gene Description	SLAM family member 8
Omim ID	606620
Gene Ontology	Hyperlink
Gene Summary	<p>This gene encodes a member of the CD2 family of cell surface proteins involved in lymphocyte activation. These proteins are characterized by Ig domains. This protein is expressed in lymphoid tissues, and studies of a similar protein in mouse suggest that it may function during B cell lineage commitment. The gene is found in a region of chromosome 1 containing many CD2 genes. [provided by RefSeq]</p>
Other Designations	B lymphocyte activator macrophage expressed BCM-like membrane protein OTTHUMP00000033462