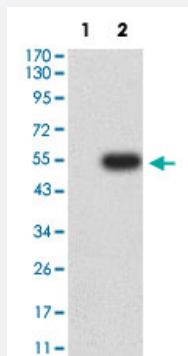


BTN1A1 monoclonal antibody, clone 4B11B3

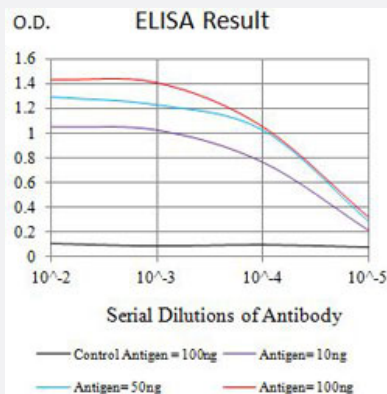
Catalog # MAB21350 Size 100 ug

Applications



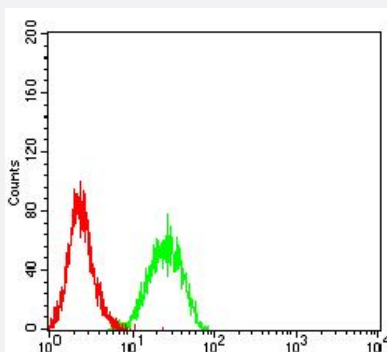
Western Blot (Transfected lysate)

Western Blot analysis of Lane 1: HEK293 and Lane 2: BTN1A1-hlgGfc transfected HEK293 cell lysates with BTN1A1 monoclonal antibody, clone 4B11B3 (Cat # MAB21350).



Enzyme-linked Immunoabsorbent Assay

ELISA analysis with BTN1A1 monoclonal antibody, clone 4B11B3 (Cat # MAB21350).



Flow Cytometry

Flow cytometric analysis of K562 cells with BTN1A1 monoclonal antibody, clone 4B11B3 (Cat # MAB21350) (Green). Red: Negative Control.

Specification

Product Description	Mouse monoclonal antibody raised against partial recombinant human BTN1A1.
Immunogen	Recombinant protein corresponding to amino acids 27-242 of human BTN1A1.
Host	Mouse
Theoretical MW (kDa)	58.9
Reactivity	Human
Form	Liquid
Isotype	IgG2b
Recommend Usage	ELISA (1:10000) Flow Cytometry (1:200-1:400) Western Blot (1:500-1:2000) The optimal working dilution should be determined by the end user.
Storage Buffer	In PBS (0.05% sodium azide).
Storage Instruction	Store at 4°C. For long term storage store at -20°C. Aliquot to avoid repeated freezing and thawing.
Note	This product contains sodium azide: a POISONOUS AND HAZARDOUS SUBSTANCE which should be handled by trained staff only.

Applications

- Western Blot (Transfected lysate)

Western Blot analysis of Lane 1: HEK293 and Lane 2: BTN1A1-hlgGfc transfected HEK293 cell lysates with BTN1A1 monoclonal antibody, clone 4B11B3 (Cat # MAB21350).

- Enzyme-linked Immunoabsorbent Assay

ELISA analysis with BTN1A1 monoclonal antibody, clone 4B11B3 (Cat # MAB21350).

- Flow Cytometry

Flow cytometric analysis of K562 cells with BTN1A1 monoclonal antibody, clone 4B11B3 (Cat # MAB21350) (Green). Red: Negative Control.

Gene Info — BTN1A1

Entrez GeneID [696](#)

Protein Accession# [Q13410](#)

Gene Name	BTN1A1
Gene Alias	BT, BTN
Gene Description	butyrophilin, subfamily 1, member A1
Omim ID	601610
Gene Ontology	Hyperlink
Gene Summary	Butyrophilin is the major protein associated with fat droplets in the milk. It is a member of the immunoglobulin superfamily. It may have a cell surface receptor function. The human butyrophilin gene is localized in the major histocompatibility complex (MHC) class I region of 6p and may have arisen relatively recently in evolution by the shuffling of exons between 2 ancestral gene families [provided by RefSeq]
Other Designations	OTTHUMP00000017981 bK14H9.2 (butyrophilin, subfamily 1, member A1)