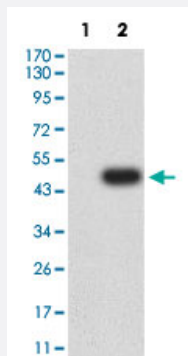


PSG1 monoclonal antibody, clone 5C6G7

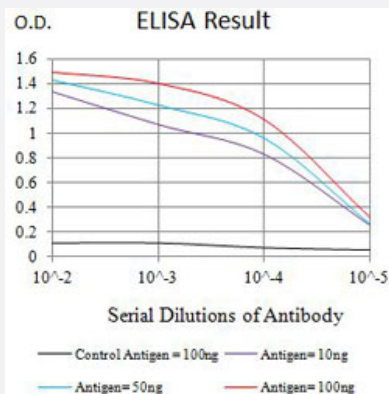
Catalog # MAB21345 Size 100 ug

Applications



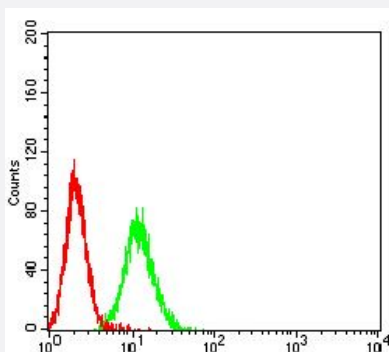
Western Blot (Transfected lysate)

Western Blot analysis of Lane 1: HEK293 and Lane 2: PSG1-hlgGfc transfected HEK293 cell lysates with PSG1 monoclonal antibody, clone 5C6G7 (Cat # MAB21345).



Enzyme-linked Immunoabsorbent Assay

ELISA analysis with PSG1 monoclonal antibody, clone 5C6G7 (Cat # MAB21345).



Flow Cytometry

Flow cytometric analysis of K562 cells with PSG1 monoclonal antibody, clone 5C6G7 (Cat # MAB21345) (Green). Red: Negative Control.

Specification

Product Description	Mouse monoclonal antibody raised against partial recombinant human PSG1.
Immunogen	Recombinant protein corresponding to amino acids 250-419 of human PSG1.
Host	Mouse
Theoretical MW (kDa)	47.2
Reactivity	Human
Form	Liquid
Isotype	IgG1
Recommend Usage	ELISA (1:10000) Flow Cytometry (1:200-1:400) Western Blot (1:500-1:2000) The optimal working dilution should be determined by the end user.
Storage Buffer	In PBS (0.05% sodium azide).
Storage Instruction	Store at 4°C. For long term storage store at -20°C. Aliquot to avoid repeated freezing and thawing.
Note	This product contains sodium azide: a POISONOUS AND HAZARDOUS SUBSTANCE which should be handled by trained staff only.

Applications

- Western Blot (Transfected lysate)

Western Blot analysis of Lane 1: HEK293 and Lane 2: PSG1-hlgGfc transfected HEK293 cell lysates with PSG1 monoclonal antibody, clone 5C6G7 (Cat # MAB21345).

- Enzyme-linked Immunoabsorbent Assay

ELISA analysis with PSG1 monoclonal antibody, clone 5C6G7 (Cat # MAB21345).

- Flow Cytometry

Flow cytometric analysis of K562 cells with PSG1 monoclonal antibody, clone 5C6G7 (Cat # MAB21345) (Green). Red: Negative Control.

Gene Info — PSG1

Entrez GeneID [5669](#)

Protein Accession# [P11464](#)

Gene Name	PSG1
Gene Alias	B1G1, CD66f, DHFRP2, FLJ90598, FLJ90654, PBG1, PSBG1, PSGGA, PSGIIA, SP1
Gene Description	pregnancy specific beta-1-glycoprotein 1
Omim ID	176390
Gene Ontology	Hyperlink
Other Designations	pregnancy-specific B-1 glycoprotein