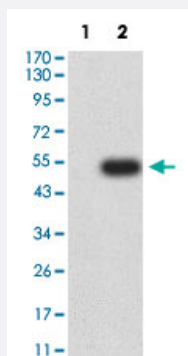


# SLAMF6 monoclonal antibody, clone 8F1C2

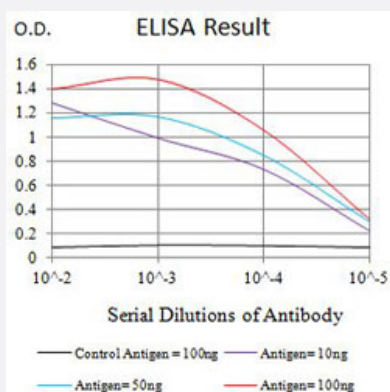
Catalog # MAB21336      Size 100 ug

## Applications



### Western Blot (Transfected lysate)

Western Blot analysis of Lane 1: HEK293 and Lane 2: SLAMF6-hlgGfC transfected HEK293 cell lysates with SLAMF6 monoclonal antibody, clone 8F1C2 (Cat # MAB21336).



### Enzyme-linked Immunoabsorbent Assay

ELISA analysis with SLAMF6 monoclonal antibody, clone 8F1C2 (Cat # MAB21336).

## Specification

Product Description	Mouse monoclonal antibody raised against partial recombinant human SLAMF6.
Immunogen	Recombinant protein corresponding to amino acids 22-226 of human SLAMF6.
Host	Mouse
Theoretical MW (kDa)	37.4
Reactivity	Human
Form	Liquid

Isotype	IgG1
Recommend Usage	ELISA (1:10000) Western Blot (1:500-1:2000) The optimal working dilution should be determined by the end user.
Storage Buffer	In PBS (0.05% sodium azide).
Storage Instruction	Store at 4°C. For long term storage store at -20°C. Aliquot to avoid repeated freezing and thawing.
Note	This product contains sodium azide: a POISONOUS AND HAZARDOUS SUBSTANCE which should be handled by trained staff only.

## Applications

- Western Blot (Transfected lysate)

Western Blot analysis of Lane 1: HEK293 and Lane 2: SLAMF6-hlgGfc transfected HEK293 cell lysates with SLAMF6 monoclonal antibody, clone 8F1C2 (Cat # MAB21336).

- Enzyme-linked Immunoabsorbent Assay

ELISA analysis with SLAMF6 monoclonal antibody, clone 8F1C2 (Cat # MAB21336).

## Gene Info — SLAMF6

Entrez GeneID	<a href="#">114836</a>
Protein Accession#	<a href="#">Q96DU3</a>
Gene Name	SLAMF6
Gene Alias	KALI, KAL1b, Ly108, MGC104953, NTB-A, NTBA, SF2000
Gene Description	SLAM family member 6
Omim ID	<a href="#">606446</a>
Gene Ontology	<a href="#">Hyperlink</a>
Gene Summary	The protein encoded by this gene is a type I transmembrane protein, belonging to the CD2 subfamily of the immunoglobulin superfamily. This encoded protein is expressed on Natural killer (NK), T, and B lymphocytes. It undergoes tyrosine phosphorylation and associates with the Src homology 2 domain-containing protein (SH2D1A) as well as with SH2 domain-containing phosphatases (SHPs). It may function as a coreceptor in the process of NK cell activation. It can also mediate inhibitory signals in NK cells from X-linked lymphoproliferative patients. [provided by RefSeq]

**Other Designations**

NTBA receptor|OTTHUMP00000024348|activating NK receptor|natural killer-, T- and B-cell antigen

**Disease**

- [Cardiovascular Diseases](#)
- [Diabetes Mellitus](#)
- [Edema](#)
- [Tobacco Use Disorder](#)