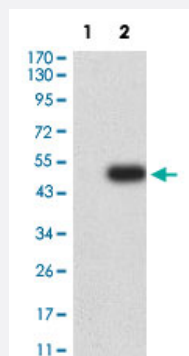


# CLEC4A monoclonal antibody, clone 1B4A10

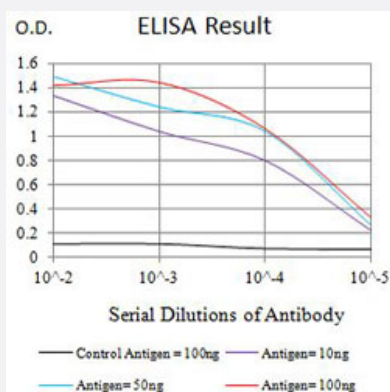
Catalog # MAB21333      Size 100 ug

## Applications



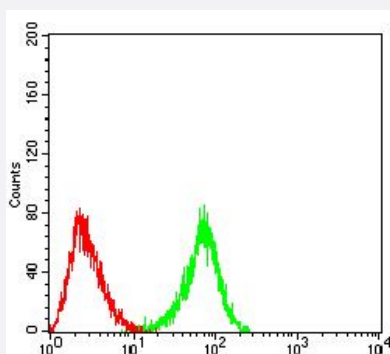
### Western Blot (Transfected lysate)

Western Blot analysis of Lane 1: HEK293 and Lane 2: CLEC4A-hlgGfc transfected HEK293 cell lysates with CLEC4A monoclonal antibody, clone 1B4A10 (Cat # MAB21333).



### Enzyme-linked Immunoabsorbent Assay

ELISA analysis with CLEC4A monoclonal antibody, clone 1B4A10 (Cat # MAB21333).



### Flow Cytometry

Flow cytometric analysis of HL-60 cells with CLEC4A monoclonal antibody, clone 1B4A10 (Cat # MAB21333) (Green). Red: Negative Control.

## Specification

Product Description	Mouse monoclonal antibody raised against partial recombinant human CLEC4A.
Immunogen	Recombinant protein corresponding to amino acids 70-237 of human CLEC4A.
Host	Mouse
Theoretical MW (kDa)	27.5
Reactivity	Human
Form	Liquid
Isotype	IgG2a
Recommend Usage	ELISA (1:10000) Flow Cytometry (1:200-1:400) Western Blot (1:500-1:2000) The optimal working dilution should be determined by the end user.
Storage Buffer	In PBS (0.05% sodium azide).
Storage Instruction	Store at 4°C. For long term storage store at -20°C. Aliquot to avoid repeated freezing and thawing.
Note	This product contains sodium azide: a POISONOUS AND HAZARDOUS SUBSTANCE which should be handled by trained staff only.

## Applications

- Western Blot (Transfected lysate)

Western Blot analysis of Lane 1: HEK293 and Lane 2: CLEC4A-hlgGfc transfected HEK293 cell lysates with CLEC4A monoclonal antibody, clone 1B4A10 (Cat # MAB21333).

- Enzyme-linked Immunoabsorbent Assay

ELISA analysis with CLEC4A monoclonal antibody, clone 1B4A10 (Cat # MAB21333).

- Flow Cytometry

Flow cytometric analysis of HL-60 cells with CLEC4A monoclonal antibody, clone 1B4A10 (Cat # MAB21333) (Green). Red: Negative Control.

## Gene Info — CLEC4A

Entrez GeneID [50856](#)

Protein Accession# [Q9UMR7](#)

Gene Name	CLEC4A
Gene Alias	CLECSF6, DCIR, DDB27, HDCGC13P, LLIR
Gene Description	C-type lectin domain family 4, member A
Omim ID	<a href="#">605306</a>
Gene Ontology	<a href="#">Hyperlink</a>
Gene Summary	<p>This gene encodes a member of the C-type lectin/C-type lectin-like domain (CTL/CTLD) superfamily. Members of this family share a common protein fold and have diverse functions, such as cell adhesion, cell-cell signalling, glycoprotein turnover, and roles in inflammation and immune response. The encoded type 2 transmembrane protein may play a role in inflammatory and immune response. Multiple transcript variants encoding distinct isoforms have been identified for this gene. This gene is closely linked to other CTL/CTLD superfamily members on chromosome 12p13 in the natural killer gene complex region. [provided by RefSeq]</p>
Other Designations	C-type (calcium dependent, carbohydrate-recognition domain) lectin, superfamily member 6 dendritic cell immunoreceptor lectin-like immunoreceptor