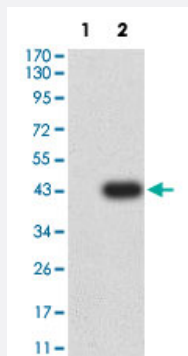


# CEACAM5 monoclonal antibody, clone 3B9C9

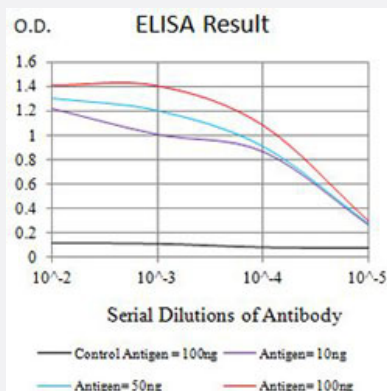
Catalog # MAB21329 Size 100 ug

## Applications



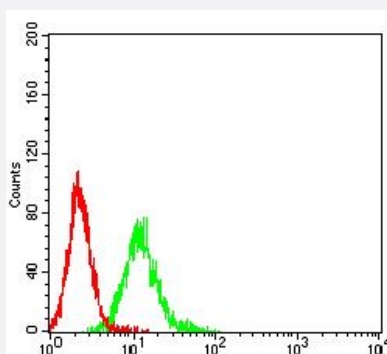
### Western Blot (Transfected lysate)

Western Blot analysis of Lane 1: HEK293 and Lane 2: CEACAM5-hlgGfC transfected HEK293 cell lysates with CEACAM5 monoclonal antibody, clone 3B9C9 (Cat # MAB21329).



### Enzyme-linked Immunoabsorbent Assay

ELISA analysis with CEACAM5 monoclonal antibody, clone 3B9C9 (Cat # MAB21329).



### Flow Cytometry

Flow cytometric analysis of K562 cells with CEACAM5 monoclonal antibody, clone 3B9C9 (Cat # MAB21329) (Green). Red: Negative Control.

## Specification

<b>Product Description</b>	Mouse monoclonal antibody raised against partial recombinant human CEACAM5.
<b>Immunogen</b>	Recombinant protein corresponding to amino acids 35-165 of human CEACAM5.
<b>Host</b>	Mouse
<b>Theoretical MW (kDa)</b>	76.8
<b>Reactivity</b>	Human
<b>Form</b>	Liquid
<b>Isotype</b>	IgG2a
<b>Recommend Usage</b>	ELISA (1:10000) Flow Cytometry (1:200-1:400) Western Blot (1:500-1:2000) The optimal working dilution should be determined by the end user.
<b>Storage Buffer</b>	In PBS (0.05% sodium azide).
<b>Storage Instruction</b>	Store at 4°C. For long term storage store at -20°C. Aliquot to avoid repeated freezing and thawing.
<b>Note</b>	This product contains sodium azide: a POISONOUS AND HAZARDOUS SUBSTANCE which should be handled by trained staff only.

## Applications

- Western Blot (Transfected lysate)

Western Blot analysis of Lane 1: HEK293 and Lane 2: CEACAM5-hlgGfC transfected HEK293 cell lysates with CEACAM5 monoclonal antibody, clone 3B9C9 (Cat # MAB21329).

- Enzyme-linked Immunoabsorbent Assay

ELISA analysis with CEACAM5 monoclonal antibody, clone 3B9C9 (Cat # MAB21329).

- Flow Cytometry

Flow cytometric analysis of K562 cells with CEACAM5 monoclonal antibody, clone 3B9C9 (Cat # MAB21329) (Green). Red: Negative Control.

## Gene Info — CEACAM5

**Entrez GeneID** [1048](#)

**Protein Accession#** [P06731](#)

Gene Name	CEACAM5
Gene Alias	CD66e, CEA, DKFZp781M2392
Gene Description	carcinoembryonic antigen-related cell adhesion molecule 5
Omim ID	<a href="#">114890</a>
Gene Ontology	<a href="#">Hyperlink</a>
Other Designations	-