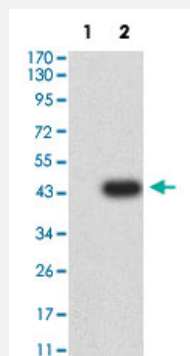


CD46 monoclonal antibody, clone 5A8C11

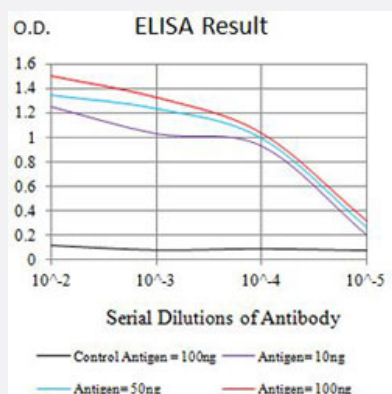
Catalog # MAB21320 Size 100 ug

Applications



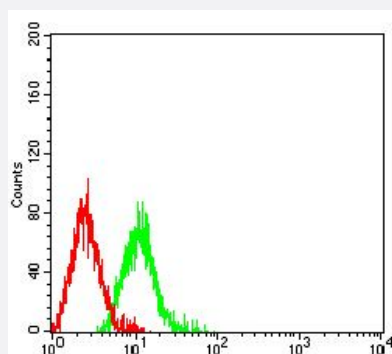
Western Blot (Transfected lysate)

Western Blot analysis of Lane 1: HEK293 and Lane 2: CD46-hlgGfC transfected HEK293 cell lysates with CD46 monoclonal antibody, clone 5A8C11 (Cat # MAB21320).



Enzyme-linked Immunoabsorbent Assay

ELISA analysis with CD46 monoclonal antibody, clone 5A8C11 (Cat # MAB21320).



Flow Cytometry

Flow cytometric analysis of HL-60 cells with CD46 monoclonal antibody, clone 5A8C11 (Cat # MAB21320) (Green). Red: Negative Control.

Specification

Product Description	Mouse monoclonal antibody raised against partial recombinant human CD46.
Immunogen	Recombinant protein corresponding to amino acids 35-179 of human CD46.
Host	Mouse
Theoretical MW (kDa)	43.7
Reactivity	Human
Form	Liquid
Isotype	IgG1
Recommend Usage	ELISA (1:10000) Flow Cytometry (1:200-1:400) Immunocytochemistry (1:100-1:500) Western Blot (1:500-1:2000) The optimal working dilution should be determined by the end user.
Storage Buffer	In PBS (0.05% sodium azide).
Storage Instruction	Store at 4°C. For long term storage store at -20°C. Aliquot to avoid repeated freezing and thawing.
Note	This product contains sodium azide: a POISONOUS AND HAZARDOUS SUBSTANCE which should be handled by trained staff only.

Applications

- Western Blot (Transfected lysate)

Western Blot analysis of Lane 1: HEK293 and Lane 2: CD46-hlgGfc transfected HEK293 cell lysates with CD46 monoclonal antibody, clone 5A8C11 (Cat # MAB21320).

- Immunocytochemistry

- Enzyme-linked Immunoabsorbent Assay

ELISA analysis with CD46 monoclonal antibody, clone 5A8C11 (Cat # MAB21320).

- Flow Cytometry

Flow cytometric analysis of HL-60 cells with CD46 monoclonal antibody, clone 5A8C11 (Cat # MAB21320) (Green). Red: Negative Control.

Gene Info — CD46

Entrez GeneID	4179
Protein Accession#	P15529
Gene Name	CD46
Gene Alias	MCP, MGC26544, MIC10, TLX, TRA2.10
Gene Description	CD46 molecule, complement regulatory protein
Omim ID	120920 235400
Gene Ontology	Hyperlink
Gene Summary	<p>The protein encoded by this gene is a type I membrane protein and is a regulatory part of the complement system. The encoded protein has cofactor activity for inactivation of complement components C3b and C4b by serum factor I, which protects the host cell from damage by complement. In addition, the encoded protein can act as a receptor for the Edmonston strain of measles virus, human herpesvirus-6, and type IV pili of pathogenic Neisseria. Finally, the protein encoded by this gene may be involved in the fusion of the spermatozoa with the oocyte during fertilization. This gene is found in a cluster on chromosome 1q32 with other genes encoding structural components of the complement system. At least fourteen different transcript variants encoding fourteen different isoforms have been found for this gene. [provided by RefSeq]</p>
Other Designations	<p>CD46 antigen, complement regulatory protein OTTHUMP00000034577 OTTHUMP00000034622 OTTHUMP00000034623 OTTHUMP00000034624 OTTHUMP00000034625 OTTHUMP00000034626 OTTHUMP00000034706 antigen identified by monoclonal antibody TRA-2-10 complement membrane cofactor</p>

Pathway

- [Complement and coagulation cascades](#)

Disease

- [Abortion](#)
- [Birth Weight](#)
- [Genetic Predisposition to Disease](#)
- [Glioblastoma](#)
- [Glioma](#)
- [Hemolytic-Uremic Syndrome](#)

- [Leukemia](#)
- [Lymphoma](#)
- [Macular Degeneration](#)
- [Meningeal Neoplasms](#)
- [Meningioma](#)
- [Recurrence](#)