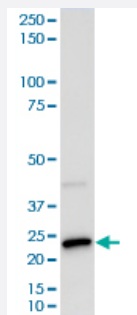


# SCGB2A2 monoclonal antibody, clone MGB/2000

Catalog # MAB21304

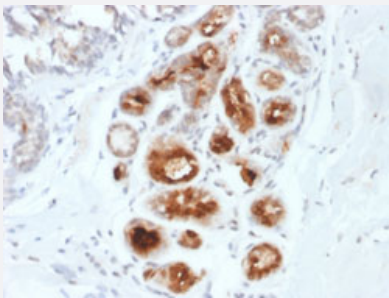
Size 100 ug

## Applications



### Western Blot (Cell lysate)

Western Blot (cell lysate) analysis of SK-BR3 cell lysate.



### Immunohistochemistry (Formalin/PFA-fixed paraffin-embedded sections)

Immunohistochemical staining of human breast carcinoma.

## Specification

<b>Product Description</b>	Mouse monoclonal antibody raised against full length recombinant human SCGB2A2.
<b>Immunogen</b>	Recombinant protein corresponding to full-length human SCGB2A2.
<b>Host</b>	Mouse
<b>Reactivity</b>	Human
<b>Form</b>	Liquid
<b>Purification</b>	Protein A/G purification
<b>Isotype</b>	IgG1, kappa

<b>Recommend Usage</b>	Immunohistochemistry (Formalin/PFA-fixed paraffin-embedded sections) (0.1-0.2 ug/mL) The optimal working dilution should be determined by the end user.
<b>Storage Buffer</b>	In 1 mg/mL PBS.
<b>Storage Instruction</b>	Store at -20 to -80°C. Aliquot to avoid repeated freezing and thawing.

## Applications

- Western Blot (Cell lysate)

Western Blot (cell lysate) analysis of SK-BR3 cell lysate.

- Immunohistochemistry (Formalin/PFA-fixed paraffin-embedded sections)

Immunohistochemical staining of human breast carcinoma.

## Gene Info — SCGB2A2

<b>Entrez GeneID</b>	<a href="#">4250</a>
<b>Protein Accession#</b>	<a href="#">Q13296</a>
<b>Gene Name</b>	SCGB2A2
<b>Gene Alias</b>	MGB1, MGC71974, UGB2
<b>Gene Description</b>	secretoglobin, family 2A, member 2
<b>Omim ID</b>	<a href="#">605562</a>
<b>Gene Ontology</b>	<a href="#">Hyperlink</a>
<b>Gene Summary</b>	family 2A
<b>Other Designations</b>	mammaglobin 1 mammaglobin A