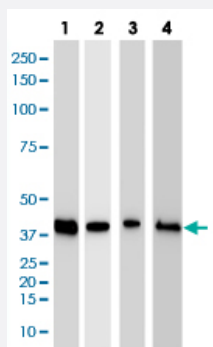


RPSA monoclonal antibody, clone RPSA/2699

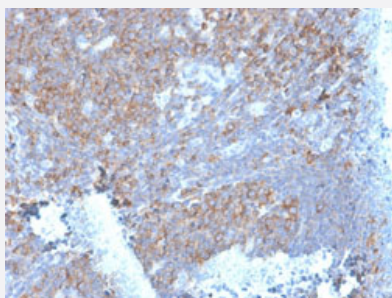
Catalog # MAB21285 Size 100 ug

Applications



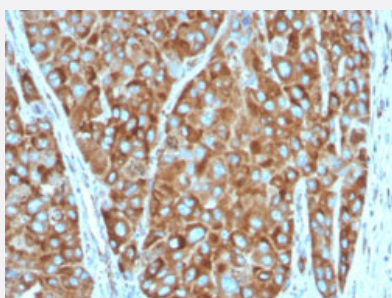
Western Blot

Western Blot analysis of (1) MCF-7, (2) MDA-MB-453, (3) SK-BR3, (4) HeLa cell lysates.



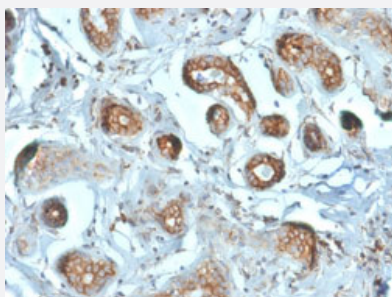
Immunohistochemistry (Formalin/PFA-fixed paraffin-embedded sections)

Immunohistochemical staining of human tonsil.



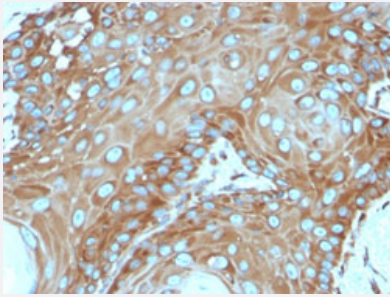
Immunohistochemistry (Formalin/PFA-fixed paraffin-embedded sections)

Immunohistochemical staining of human colon carcinoma.



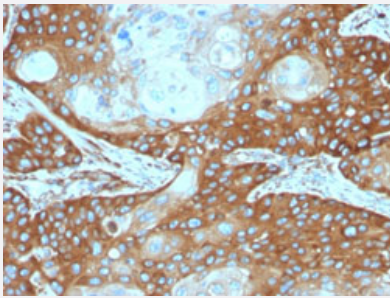
Immunohistochemistry (Formalin/PFA-fixed paraffin-embedded sections)

Immunohistochemical staining of human breast carcinoma.



Immunohistochemistry (Formalin/PFA-fixed paraffin-embedded sections)

Immunohistochemical staining of human basal cell carcinoma.



Immunohistochemistry (Formalin/PFA-fixed paraffin-embedded sections)

Immunohistochemical staining of human cervix carcinoma.

Specification

Product Description	Mouse monoclonal antibody raised against full length recombinant human RPSA.
Immunogen	Recombinant protein corresponding to full-length human RPSA.
Host	Mouse
Reactivity	Human
Form	Liquid
Purification	Protein A/G purification
Isotype	IgG1, kappa
Recommend Usage	Immunohistochemistry (Formalin/PFA-fixed paraffin-embedded sections) (1-2 ug/mL) Western Blot (1-2 ug/mL) The optimal working dilution should be determined by the end user.
Storage Buffer	In 10 mM PBS (0.05% BSA and 0.05% azide).
Storage Instruction	Store at 2 to 8°C.
Note	This product contains sodium azide: a POISONOUS AND HAZARDOUS SUBSTANCE which should be handled by trained staff only.

Applications

- Western Blot

Western Blot analysis of (1) MCF-7, (2) MDA-MB-453, (3) SK-BR3, (4) HeLa cell lysates.

- Immunohistochemistry (Formalin/PFA-fixed paraffin-embedded sections)

Immunohistochemical staining of human tonsil.

- Immunohistochemistry (Formalin/PFA-fixed paraffin-embedded sections)

Immunohistochemical staining of human colon carcinoma.

- Immunohistochemistry (Formalin/PFA-fixed paraffin-embedded sections)

Immunohistochemical staining of human breast carcinoma.

- Immunohistochemistry (Formalin/PFA-fixed paraffin-embedded sections)

Immunohistochemical staining of human basal cell carcinoma.

- Immunohistochemistry (Formalin/PFA-fixed paraffin-embedded sections)

Immunohistochemical staining of human cervix carcinoma.

Gene Info — RPSA

Entrez GeneID	3921
---------------	----------------------

Protein Accession#	P08865
--------------------	------------------------

Gene Name	RPSA
-----------	------

Gene Alias	37LRP, 67LR, LAMBR, LAMR1, LRP, p40
------------	-------------------------------------

Gene Description	ribosomal protein SA
------------------	----------------------

Omim ID	150370
---------	------------------------

Gene Ontology	Hyperlink
---------------	---------------------------

Gene Summary

Laminins, a family of extracellular matrix glycoproteins, are the major noncollagenous constituent of basement membranes. They have been implicated in a wide variety of biological processes including cell adhesion, differentiation, migration, signaling, neurite outgrowth and metastasis. Many of the effects of laminin are mediated through interactions with cell surface receptors. These receptors include members of the integrin family, as well as non-integrin laminin-binding proteins. This gene encodes a high-affinity, non-integrin family, laminin receptor 1. This receptor has been variously called 67 kD laminin receptor, 37 kD laminin receptor precursor (37LRP) and p40 ribosome-associated protein. The amino acid sequence of laminin receptor 1 is highly conserved through evolution, suggesting a key biological function. It has been observed that the level of the laminin receptor transcript is higher in colon carcinoma tissue and lung cancer cell line than their normal counterparts. Also, there is a correlation between the upregulation of this polypeptide in cancer cells and their invasive and metastatic phenotype. Multiple copies of this gene exist, however, most of them are pseudogenes thought to have arisen from retropositional events. Two alternatively spliced transcript variants encoding the same protein have been found for this gene. [provided by RefSeq]

Other Designations

67kD, ribosomal protein SA|laminin receptor 1 (67kD, ribosomal protein SA)

Pathway

- [Ribosome](#)