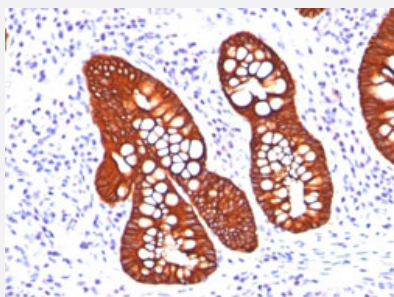


# KRT19 monoclonal antibody, clone A53-B/A2.26 + BA17

Catalog # MAB21283      Size 100 ug

## Applications



### Immunohistochemistry (Formalin/PFA-fixed paraffin-embedded sections)

Immunohistochemical staining of human colon carcinoma.

## Specification

<b>Product Description</b>	Mouse monoclonal antibody raised against human KRT19.
<b>Immunogen</b>	Human breast cancer MCF-7 cells (A53-B/A2) and human mammary epithelial organoids (BA17).
<b>Host</b>	Mouse
<b>Reactivity</b>	Human
<b>Form</b>	Liquid
<b>Purification</b>	Protein A/G purification
<b>Isotype</b>	IgG1, kappa; IgG2a, kappa
<b>Recommend Usage</b>	Flow Cytometry (0.5-1 ug/million cells in 0.1 mL) Immunofluorescence (1-2 ug/mL) Immunohistochemistry (Formalin/PFA-fixed paraffin-embedded sections) (0.5-1 ug/mL) The optimal working dilution should be determined by the end user.
<b>Storage Buffer</b>	In 10 mM PBS (0.05% BSA and 0.05% azide).
<b>Storage Instruction</b>	Store at 2 to 8°C.

## Note

This product contains sodium azide: a POISONOUS AND HAZARDOUS SUBSTANCE which should be handled by trained staff only.

## Applications

- Immunohistochemistry (Formalin/PFA-fixed paraffin-embedded sections)

Immunohistochemical staining of human colon carcinoma.

- Immunofluorescence

- Flow Cytometry

## Gene Info — KRT19

Entrez GeneID [3880](#)

Protein Accession# [P08727](#)

Gene Name KRT19

Gene Alias CK19, K19, K1CS, MGC15366

Gene Description keratin 19

Omim ID [148020](#)

Gene Ontology [Hyperlink](#)

## Gene Summary

The protein encoded by this gene is a member of the keratin family. The keratins are intermediate filament proteins responsible for the structural integrity of epithelial cells and are subdivided into cytokeratins and hair keratins. The type I cytokeratins consist of acidic proteins which are arranged in pairs of heterotypic keratin chains. Unlike its related family members, this smallest known acidic cytokeratin is not paired with a basic cytokeratin in epithelial cells. It is specifically expressed in the periderm, the transiently superficial layer that envelopes the developing epidermis. The type I cytokeratins are clustered in a region of chromosome 17q12-q21. [provided by RefSeq]

Other Designations 40-kDa keratin intermediate filament|cytokeratin 19|keratin, type I cytoskeletal 19|keratin, type I, 40-kd

## Disease

- [Liver Cirrhosis](#)