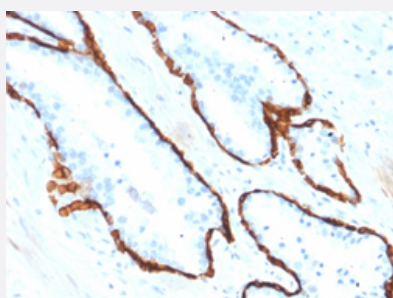


# KRT15 monoclonal antibody, clone KRT15/2554

Catalog # MAB21282      Size 100 ug

## Applications



### Immunohistochemistry (Formalin/PFA-fixed paraffin-embedded sections)

Immunohistochemical staining (Formalin-fixed paraffin-embedded sections) of human prostate cancer with KRT15 monoclonal antibody, clone KRT15/2554 (Cat # MAB21282).

## Specification

<b>Product Description</b>	Mouse monoclonal antibody raised against full length recombinant human KRT15.
<b>Immunogen</b>	Recombinant protein corresponding to full length human KRT15.
<b>Host</b>	Mouse
<b>Theoretical MW (kDa)</b>	52
<b>Reactivity</b>	Human
<b>Form</b>	Liquid
<b>Purification</b>	Protein A/G purification
<b>Isotype</b>	IgG2b, kappa
<b>Recommend Usage</b>	Immunohistochemistry (Formalin/PFA-fixed paraffin-embedded sections) (1-2 ug/mL) Immunohistochemistry (Frozen sections) (1-2 ug/mL) The optimal working dilution should be determined by the end user.
<b>Storage Buffer</b>	In 10 mM PBS.

**Storage Instruction**

Store at -20 to -80°C.  
Aliquot to avoid repeated freezing and thawing.

## Applications

- Immunohistochemistry (Formalin/PFA-fixed paraffin-embedded sections)

Immunohistochemical staining (Formalin-fixed paraffin-embedded sections) of human prostate cancer with KRT15 monoclonal antibody, clone KRT15/2554 (Cat # MAB21282).

- Immunohistochemistry (Frozen sections)

## Gene Info — KRT15

Entrez GeneID [3866](#)

Protein Accession# [P19012](#)

Gene Name KRT15

Gene Alias CK15, K15, K1CO

Gene Description keratin 15

Omim ID [148030](#)

Gene Ontology [Hyperlink](#)

**Gene Summary** The protein encoded by this gene is a member of the keratin gene family. The keratins are intermediate filament proteins responsible for the structural integrity of epithelial cells and are subdivided into cytokeratins and hair keratins. Most of the type I cytokeratins consist of acidic proteins which are arranged in pairs of heterotypic keratin chains and are clustered in a region on chromosome 17q21.2. [provided by RefSeq]

**Other Designations** OTTHUMP00000165060|cytokeratin 15|keratin-15, basic|keratin-15, beta|type I cytoskeletal 15