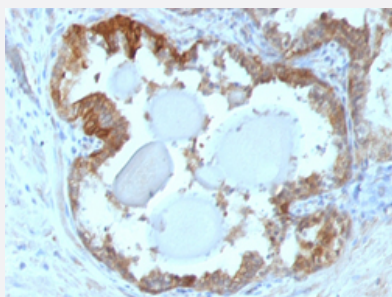


# HSPB1 monoclonal antibody, clone G3.1

Catalog # MAB21235      Size 100 ug

## Applications



### Immunohistochemistry (Formalin/PFA-fixed paraffin-embedded sections)

Immunohistochemical staining (Formalin-fixed paraffin-embedded sections) of human prostate cancer with HSPB1 monoclonal antibody, clone G3.1 (Cat # MAB21235).

## Specification

**Product Description** Mouse monoclonal antibody raised against human HSPB1.

**Immunogen** Partially purified hsp27 (earlier called 24K) protein from breast cancer MCF-7 cells.

**Host** Mouse

**Theoretical MW (kDa)** 27

**Reactivity** Human

**Form** Liquid

**Purification** Protein A/G purification

**Isotype** IgG1, kappa

**Recommend Usage**

- Flow Cytometry (0.5-1 ug/10<sup>6</sup> cells in 0.1 mL)
- Immunofluorescence (0.5-1 ug/mL)
- Immunohistochemistry (Formalin/PFA-fixed paraffin-embedded sections) (0.25-0.5 ug/mL)
- Western Blot (0.5-1 ug/mL)
- The optimal working dilution should be determined by the end user.

**Storage Buffer** In 10 mM PBS (0.05% BSA, 0.05% sodium azide).

## Storage Instruction

Store at 4°C.

## Note

This product contains sodium azide: a POISONOUS AND HAZARDOUS SUBSTANCE which should be handled by trained staff only.

## Applications

- Western Blot
- Immunohistochemistry (Formalin/PFA-fixed paraffin-embedded sections)  
Immunohistochemical staining (Formalin-fixed paraffin-embedded sections) of human prostate cancer with HSPB1 monoclonal antibody, clone G3.1 (Cat # MAB21235).
- Immunofluorescence
- Flow Cytometry

## Gene Info — HSPB1

**Entrez GeneID** [3315](#)**Protein Accession#** [P04792](#)**Gene Name** HSPB1**Gene Alias** CMT2F, DKFZp586P1322, HMN2B, HS.76067, HSP27, HSP28, Hsp25, SRP27**Gene Description** heat shock 27kDa protein 1**Omim ID** [602195](#) [606595](#) [608634](#)**Gene Ontology** [Hyperlink](#)

**Gene Summary** The protein encoded by this gene is induced by environmental stress and developmental changes. The encoded protein is involved in stress resistance and actin organization and translocates from the cytoplasm to the nucleus upon stress induction. Defects in this gene are a cause of Charcot-Marie-Tooth disease type 2F (CMT2F) and distal hereditary motor neuropathy (dHMN). [provided by RefSeq]

**Other Designations** OTTHUMP00000024846|estrogen-regulated 24 kDa protein|heat shock 27kD protein 1|heat shock protein beta-1|stress-responsive protein 27

## Pathway

- [MAPK signaling pathway](#)
- [VEGF signaling pathway](#)

## Disease

- [Adenocarcinoma](#)
- [Carcinoma](#)
- [Charcot-Marie-Tooth Disease](#)
- [Diabetic Nephropathies](#)
- [Genetic Predisposition to Disease](#)
- [Lung Neoplasms](#)
- [Small Cell Lung Carcinoma](#)