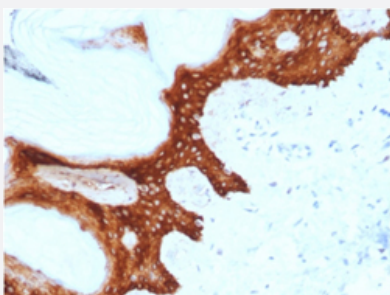


# SFN monoclonal antibody, clone CPTC-SFN-2

Catalog # MAB21205      Size 100 ug

## Applications



### Immunohistochemistry (Formalin/PFA-fixed paraffin-embedded sections)

Immunohistochemical staining (Formalin-fixed paraffin-embedded sections) of human skin with SFN monoclonal antibody, clone CPTC-SFN-2 (Cat # MAB21205).

## Specification

<b>Product Description</b>	Mouse monoclonal antibody raised against full length recombinant human SFN.
<b>Immunogen</b>	Recombinant protein corresponding to full length human SFN.
<b>Host</b>	Mouse
<b>Theoretical MW (kDa)</b>	28
<b>Reactivity</b>	Human
<b>Form</b>	Liquid
<b>Purification</b>	Protein A/G purification
<b>Isotype</b>	IgG1, kappa
<b>Recommend Usage</b>	Immunohistochemistry (Formalin/PFA-fixed paraffin-embedded sections) (0.5-1 ug/mL) Western Blot (0.5-1 ug/mL) The optimal working dilution should be determined by the end user.
<b>Storage Buffer</b>	In 10 mM PBS (0.05% BSA, 0.05% sodium azide).
<b>Storage Instruction</b>	Store at 4°C.

**Note**

This product contains sodium azide: a POISONOUS AND HAZARDOUS SUBSTANCE which should be handled by trained staff only.

## Applications

- Western Blot
- Immunohistochemistry (Formalin/PFA-fixed paraffin-embedded sections)

Immunohistochemical staining (Formalin-fixed paraffin-embedded sections) of human skin with SFN monoclonal antibody, clone CPTC-SFN-2 (Cat # MAB21205).

## Gene Info — SFN

Entrez GeneID	<a href="#">2810</a>
Protein Accession#	<a href="#">P31947</a>
Gene Name	SFN
Gene Alias	YWHAS
Gene Description	stratifin
Omim ID	<a href="#">601290</a>
Gene Ontology	<a href="#">Hyperlink</a>
Other Designations	14-3-3 sigma OTTHUMP00000004242

## Pathway

- [Cell cycle](#)
- [p53 signaling pathway](#)