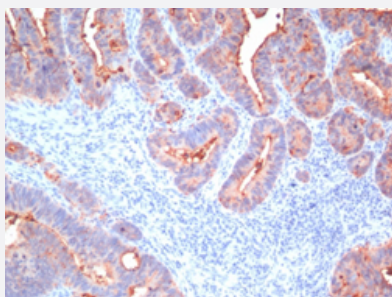


# CEA monoclonal antibody, clone C66/195 + C66/261 + C66/1009 + C66/1030

Catalog # MAB21140

Size 100 ug

## Applications



### Immunohistochemistry (Formalin/PFA-fixed paraffin-embedded sections)

Immunohistochemical staining (Formalin-fixed paraffin-embedded sections) of human colon carcinoma with CEA monoclonal antibody, clone C66/195 + C66/261 + C66/1009 + C66/1030 (Cat # MAB21140).

## Specification

<b>Product Description</b>	Mouse monoclonal antibody raised against full length recombinant human CEA.
<b>Immunogen</b>	Recombinant protein corresponding to full length human CEA.
<b>Host</b>	Mouse
<b>Theoretical MW (kDa)</b>	80-200
<b>Reactivity</b>	Human
<b>Form</b>	Liquid
<b>Purification</b>	Protein A/G purification
<b>Isotype</b>	IgG
<b>Recommend Usage</b>	Flow Cytometry (0.5-1 ug/10 <sup>6</sup> cells in 0.1 mL) Immunofluorescence (0.5-1 ug/mL) Immunohistochemistry (Formalin/PFA-fixed paraffin-embedded sections) (0.5-1 ug/mL) The optimal working dilution should be determined by the end user.

**Storage Buffer**

In 10 mM PBS.

**Storage Instruction**

Store at -20 to -80°C.

Aliquot to avoid repeated freezing and thawing.

## Applications

- Immunohistochemistry (Formalin/PFA-fixed paraffin-embedded sections)

Immunohistochemical staining (Formalin-fixed paraffin-embedded sections) of human colon carcinoma with CEA monoclonal antibody, clone C66/195 + C66/261 + C66/1009 + C66/1030 (Cat # MAB21140).

- Immunofluorescence

- Flow Cytometry