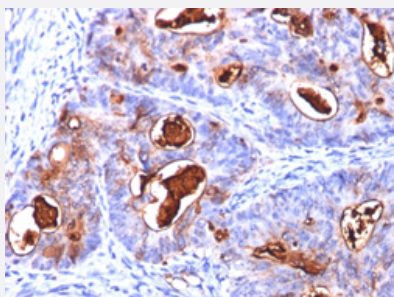


CEA monoclonal antibody, clone COL-1 + CEA31 + C66/261

Catalog # MAB21137

Size 100 ug

Applications



Immunohistochemistry (Formalin/PFA-fixed paraffin-embedded sections)

Immunohistochemical staining (Formalin-fixed paraffin-embedded sections) of human colon carcinoma with CEA monoclonal antibody, clone COL-1 + CEA31 + C66/261 (Cat # MAB21137).

Specification

Product Description	Mouse monoclonal antibody raised against human CEA.
Immunogen	Human colon carcinoma extract (COL-1 & CEA31); Recombinant protein corresponding to full length human CEA (C66/261).
Host	Mouse
Theoretical MW (kDa)	80-200
Reactivity	Human
Form	Liquid
Purification	Protein A/G purification
Recommend Usage	Flow Cytometry (0.5-1 ug/10 ⁶ cells in 0.1 mL) Immunofluorescence (0.5-1 ug/mL) Immunohistochemistry (Formalin/PFA-fixed paraffin-embedded sections) (0.25-0.5 ug/mL) The optimal working dilution should be determined by the end user.
Storage Buffer	In 10 mM PBS (0.05% BSA, 0.05% sodium azide).
Storage Instruction	Store at 4°C.

Note

This product contains sodium azide: a POISONOUS AND HAZARDOUS SUBSTANCE which should be handled by trained staff only.

Applications

- Immunohistochemistry (Formalin/PFA-fixed paraffin-embedded sections)

Immunohistochemical staining (Formalin-fixed paraffin-embedded sections) of human colon carcinoma with CEA monoclonal antibody, clone COL-1 + CEA31 + C66/261 (Cat # MAB21137).

- Immunofluorescence

- Flow Cytometry