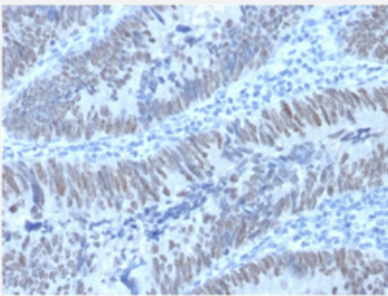


CDX2 monoclonal antibody, clone PCRP-CDX2-1A3

Catalog # MAB21136 Size 100 ug

Applications



Immunohistochemistry (Formalin/PFA-fixed paraffin-embedded sections)

Immunohistochemical staining (Formalin-fixed paraffin-embedded sections) of human colon carcinoma with CDX2 monoclonal antibody, clone PCRP-CDX2-1A3 (Cat # MAB21136).

Specification

Product Description	Mouse monoclonal antibody raised against full length recombinant human CDX2.
Immunogen	Recombinant protein corresponding to full length human CDX2.
Host	Mouse
Theoretical MW (kDa)	40
Reactivity	Human
Form	Liquid
Purification	Protein A/G purification
Isotype	IgG1, kappa
Recommend Usage	Immunohistochemistry (Formalin/PFA-fixed paraffin-embedded sections) (0.5-1 ug/mL) Immunoprecipitation (2-4 ug/mg protein lysate) Western Blot (0.5-1 ug/mL) The optimal working dilution should be determined by the end user.
Storage Buffer	In 10 mM PBS.

Storage Instruction

Store at -20 to -80°C.
Aliquot to avoid repeated freezing and thawing.

Applications

- Western Blot
- Immunohistochemistry (Formalin/PFA-fixed paraffin-embedded sections)

Immunohistochemical staining (Formalin-fixed paraffin-embedded sections) of human colon carcinoma with CDX2 monoclonal antibody, clone PCRP-CDX2-1A3 (Cat # MAB21136).

- Immunoprecipitation

Gene Info — CDX2

Entrez GeneID [1045](#)

Protein Accession# [Q99626](#)

Gene Name CDX2

Gene Alias CDX-3, CDX3

Gene Description caudal type homeobox 2

Omim ID [600297](#)

Gene Ontology [Hyperlink](#)

Gene Summary The level and beta-cell specificity of insulin gene expression are regulated by a set of nuclear proteins that bind to specific sequences within the promoter of the insulin gene (INS; MIM 176730) and interact with RNA polymerase to activate or repress transcription. The proteins LMX1 (MIM 600298) and CDX3 are homeodomain proteins that bind an A/T-rich sequence in the insulin promoter and stimulate its transcription (German et al., 1994 [PubMed 7698771]).[supplied by OMIM]

Other Designations OTTHUMP00000018176|caudal type homeo box transcription factor 2|caudal type homeobox transcription factor 2

Disease

- [Colorectal Neoplasms](#)
- [Genetic Predisposition to Disease](#)