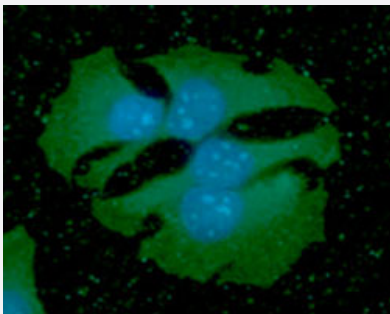


PDPN monoclonal antibody, clone 5E2

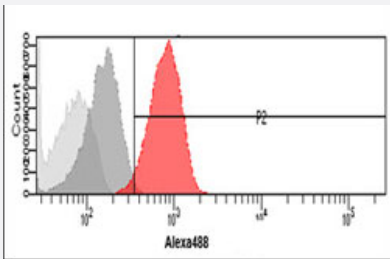
Catalog # MAB2099 Size 100 uL

Applications



Immunofluorescence

Immunofluorescence analysis of HaLe cells. The cell was stained with PDPN monoclonal antibody, clone 5E2 (1:100). The secondary antibody (green) was used Alexa Fluor 488. DAPI was stained the cell nucleus (blue).



Flow Cytometry

Flow cytometric analysis of HeLa cells. The cell was stained with PDPN monoclonal antibody, clone 5E2 at 2-5 ug for 1x10⁶ cells (red). A Goat anti mouse IgG (Alexa fluor 488) was used as the secondary antibody. Mouse monoclonal IgG was used as the isotype control (dark gray), cells without incubation with primary and secondary antibody was used as the negative control (light gray).

Specification

Product Description	Mouse monoclonal antibody raised against partial recombinant PDPN.
Immunogen	Recombinant protein corresponding to amino acids 1-206 of human PDPN.
Host	Mouse
Reactivity	Human, Mouse
Form	Liquid
Purification	Protein G purification
Isotype	IgG2b, kappa

Quality Control Testing	Antibody Reactive Against Recombinant Protein.
Recommend Usage	ELISA Flow Cytometry Immunocytochemistry Immunofluorescence The optimal working dilution should be determined by the end user.
Storage Buffer	In PBS, pH 7.4 (10% glycerol, 0.02% sodium azide).
Storage Instruction	Store at 2°C to 8°C for 1 week. For long term storage, aliquot and store at -20°C to -80°C. Aliquot to avoid repeated freezing and thawing.
Note	This product contains sodium azide: a POISONOUS AND HAZARDOUS SUBSTANCE which should be handled by trained staff only.

Applications

- Immunocytochemistry

- Immunofluorescence

Immunofluorescence analysis of HaLe cells. The cell was stained with PDPN monoclonal antibody, clone 5E2 (1:100). The secondary antibody (green) was used Alexa Fluor 488. DAPI was stained the cell nucleus (blue).

- Enzyme-linked Immunoabsorbent Assay

- Flow Cytometry

Flow cytometric analysis of HeLa cells. The cell was stained with PDPN monoclonal antibody, clone 5E2 at 2-5 ug for 1×10^6 cells (red). A Goat anti mouse IgG (Alexa fluor 488) was used as the secondary antibody. Mouse monoclonal IgG was used as the isotype control (dark gray), cells without incubation with primary and secondary antibody was used as the negative control (light gray).

Gene Info — PDPN

Entrez GeneID	10630
Protein Accession#	NP_006465
Gene Name	PDPN
Gene Alias	AGGRUS, GP36, GP40, Gp38, HT1A-1, OTS8, PA2.26, T1A, T1A-2
Gene Description	podoplanin

Omim ID	608863
Gene Ontology	Hyperlink
Gene Summary	This gene encodes a type-I integral membrane glycoprotein with diverse distribution in human tissues. The physiological function of this protein may be related to its mucin-type character. The homologous protein in other species has been described as a differentiation antigen and influenza-virus receptor. The specific function of this protein has not been determined but it has been proposed as a marker of lung injury. Alternatively spliced transcript variants encoding different isoforms have been identified. [provided by RefSeq]
Other Designations	OTTHUMP00000009640 OTTHUMP00000044504 glycoprotein, 36-KD hT1alpha-1 hT1alpha-2 lung type I cell membrane associated glycoprotein lung type-I cell membrane-associated glycoprotein lung type-I cell membrane-associated glycoprotein (T1A-2)

Publication Reference

- [The potential role of podoplanin in tumour invasion.](#)

Wicki A, Christofori G.

British Journal of Cancer 2007 Jan; 96(1):1.

Application: IHC, Human, Human colon cancer

- [Cloning and characterization of gp36, a human mucin-type glycoprotein preferentially expressed in vascular endothelium.](#)

Zimmer G, Oeffner F, Von Messling V, Tschernig T, Groness HJ, Klenk HD, Herrler G.

The Biochemical Journal 1999 Jul; 341(Pt 2):277.

Application: IF, Human, Placental

Disease

- [Genetic Predisposition to Disease](#)
- [Lymphedema](#)
- [Ovarian Neoplasms](#)
- [Tobacco Use Disorder](#)