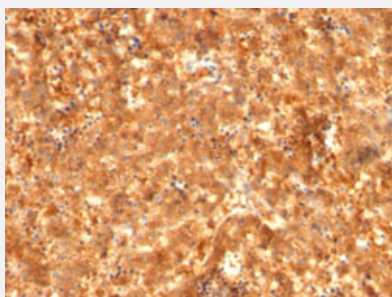


# AFP monoclonal antibody, clone C2 + C3 + MBS-12

Catalog # MAB20911      Size 100 ug

## Applications



### Immunohistochemistry (Formalin/PFA-fixed paraffin-embedded sections)

Immunohistochemical staining (Formalin-fixed paraffin-embedded sections) of human fetal liver with AFP monoclonal antibody, clone C2 + C3 + MBS-12 (Cat # MAB20911).

## Specification

Product Description	Mouse monoclonal antibody raised against full length recombinant human AFP.
Immunogen	Recombinant protein corresponding to full length human AFP.
Host	Mouse
Theoretical MW (kDa)	70
Reactivity	Human
Form	Liquid
Purification	Protein A/G purification
Recommend Usage	Flow Cytometry (0.5-1 ug/10 <sup>6</sup> cells in 0.1 mL) Immunofluorescence (0.5-1 ug/mL) Immunohistochemistry (Formalin/PFA-fixed paraffin-embedded sections) (1-2 ug/mL) The optimal working dilution should be determined by the end user.
Storage Buffer	In 10 mM PBS (0.05% BSA, 0.05% sodium azide).
Storage Instruction	Store at 2 to 8°C.

**Note**

This product contains sodium azide: a POISONOUS AND HAZARDOUS SUBSTANCE which should be handled by trained staff only.

## Applications

- Immunohistochemistry (Formalin/PFA-fixed paraffin-embedded sections)

Immunohistochemical staining (Formalin-fixed paraffin-embedded sections) of human fetal liver with AFP monoclonal antibody, clone C2 + C3 + MBS-12 (Cat # MAB20911).

- Immunofluorescence
- Flow Cytometry

## Gene Info — AFP

Entrez GeneID	<a href="#">174</a>
---------------	---------------------

Protein Accession#	<a href="#">P02771</a>
--------------------	------------------------

Gene Name	AFP
-----------	-----

Gene Alias	FETA, HPAFP
------------	-------------

Gene Description	alpha-fetoprotein
------------------	-------------------

Omim ID	<a href="#">104150</a>
---------	------------------------

Gene Ontology	<a href="#">Hyperlink</a>
---------------	---------------------------

Gene Summary	<p>This gene encodes alpha-fetoprotein, a major plasma protein produced by the yolk sac and the liver during fetal life. Alpha-fetoprotein expression in adults is often associated with hepatoma or teratoma. However, hereditary persistence of alpha-fetoprotein may also be found in individuals with no obvious pathology. The protein is thought to be the fetal counterpart of serum albumin, and the alpha-fetoprotein and albumin genes are present in tandem in the same transcriptional orientation on chromosome 4. Alpha-fetoprotein is found in monomeric as well as dimeric and trimeric forms, and binds copper, nickel, fatty acids and bilirubin. The level of alpha-fetoprotein in amniotic fluid is used to measure renal loss of protein to screen for spina bifida and anencephaly. [provided by RefSeq]</p>
--------------	--

Other Designations	OTTHUMP00000160480 alpha-1-fetoprotein alpha-fetoglobulin
--------------------	---

## Disease

- [Carcinoma](#)
- [Liver Cirrhosis](#)
- [Liver Neoplasms](#)