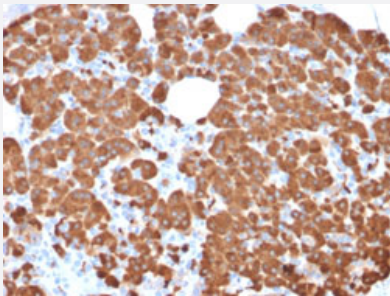


CPA1 monoclonal antibody, clone CPA1/2711

Catalog # MAB20888 Size 100 ug

Applications



Immunohistochemistry (Formalin/PFA-fixed paraffin-embedded sections)

Immunohistochemical staining (Formalin-fixed paraffin-embedded sections) of human pancreas with CPA1 monoclonal antibody, clone CPA1/2711 (Cat # MAB20888).

Specification

Product Description	Mouse monoclonal antibody raised against full length recombinant human CPA1.
Immunogen	Recombinant protein corresponding to full length human CPA1.
Host	Mouse
Theoretical MW (kDa)	47
Reactivity	Human
Form	Liquid
Purification	Protein A/G purification
Isotype	IgG1, kappa
Recommend Usage	Immunohistochemistry (Formalin/PFA-fixed paraffin-embedded sections) (1-2 ug/mL) The optimal working dilution should be determined by the end user.
Storage Buffer	In 10 mM PBS.
Storage Instruction	Store at -20 to -80°C. Aliquot to avoid repeated freezing and thawing.

Applications

- Immunohistochemistry (Formalin/PFA-fixed paraffin-embedded sections)

Immunohistochemical staining (Formalin-fixed paraffin-embedded sections) of human pancreas with CPA1 monoclonal antibody, clone CPA1/2711 (Cat # MAB20888).

Gene Info — CPA1

Entrez GeneID	1357
Protein Accession#	P15085
Gene Name	CPA1
Gene Alias	CPA
Gene Description	carboxypeptidase A1 (pancreatic)
Omim ID	114850
Gene Ontology	Hyperlink
Gene Summary	Three different forms of human pancreatic procarboxypeptidase A have been isolated. This gene encodes a monomeric pancreatic exopeptidase involved in zymogen inhibition. [provided by Ref Seq]
Other Designations	pancreatic carboxypeptidase A1