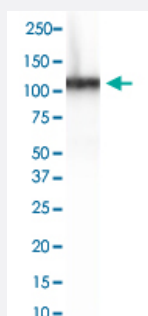


# CDH16 monoclonal antibody, clone CDH16/2125

Catalog # MAB20857

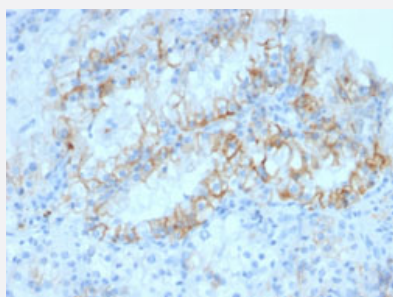
Size 100 ug

## Applications



### Western Blot (Tissue lysate)

Western Blot analysis of human kidney tissue lysate with CDH16 monoclonal antibody, clone CDH16/2125 (Cat # MAB20857).



### Immunohistochemistry (Formalin/PFA-fixed paraffin-embedded sections)

Immunohistochemical staining (Formalin-fixed paraffin-embedded sections) of human renal cell carcinoma with CDH16 monoclonal antibody, clone CDH16/2125 (Cat # MAB20857).

## Specification

<b>Product Description</b>	Mouse monoclonal antibody raised against partial recombinant human CDH16.
<b>Immunogen</b>	Recombinant protein corresponding to amino acids 371-507 of human CDH16.
<b>Host</b>	Mouse
<b>Theoretical MW (kDa)</b>	130
<b>Reactivity</b>	Human
<b>Form</b>	Liquid
<b>Purification</b>	Protein A/G purification

Isotype	IgG1, kappa
Recommend Usage	Immunohistochemistry (Formalin/PFA-fixed paraffin-embedded sections) (1-2 ug/mL) Western Blot (1-2 ug/mL) The optimal working dilution should be determined by the end user.
Storage Buffer	In 10 mM PBS (0.05% BSA, 0.05% sodium azide).
Storage Instruction	Store at 2 to 8°C.
Note	This product contains sodium azide: a POISONOUS AND HAZARDOUS SUBSTANCE which should be handled by trained staff only.

## Applications

- Western Blot (Tissue lysate)

Western Blot analysis of human kidney tissue lysate with CDH16 monoclonal antibody, clone CDH16/2125 (Cat # MAB20857).

- Immunohistochemistry (Formalin/PFA-fixed paraffin-embedded sections)

Immunohistochemical staining (Formalin-fixed paraffin-embedded sections) of human renal cell carcinoma with CDH16 monoclonal antibody, clone CDH16/2125 (Cat # MAB20857).

- Enzyme-linked Immunoabsorbent Assay

## Gene Info — CDH16

Entrez GeneID	<a href="#">1014</a>
Protein Accession#	<a href="#">O75309</a>
Gene Name	CDH16
Gene Alias	-
Gene Description	cadherin 16, KSP-cadherin
Omim ID	<a href="#">603118</a>
Gene Ontology	<a href="#">Hyperlink</a>

**Gene Summary**

This gene is a member of the cadherin superfamily, genes encoding calcium-dependent, membrane-associated glycoproteins. Mapped to a previously identified cluster of cadherin genes on chromosome 16q22.1, the gene localizes with superfamily members CDH1, CDH3, CDH5, CDH8 and CDH11. The protein consists of an extracellular domain containing 6 cadherin domains, a transmembrane region and a truncated cytoplasmic domain but lacks the prosequence and tripeptide HAV adhesion recognition sequence typical of most classical cadherins. Expression is exclusively in kidney, where the protein functions as the principal mediator of homotypic cellular recognition, playing a role in the morphogenic direction of tissue development. [provided by RefSeq]

**Other Designations**

KSP-cadherin|cadherin 16|kidney-specific cadherin